

Vergennes, Vermont Community Data Profile



Prepared for VCRD's Vergennes Community Visit
March 18, 2014

Prepared by Daniel Keeney & Michael Moser at the UVM Center for Rural Studies

What follows is a collection of indicators and information on the city of Vergennes and its residents. These data are meant to inform the March 18th community visit by the Vermont Council on Rural Development, but they certainly have many other uses.

Most of these indicators have been produced by the US Census Bureau. Sources also include the Vermont Departments of Taxes and Labor, among others.

The UVM Center for Rural Studies engages in many projects to assist Vermonters in accessing and using community-level data for their towns, cities and villages. We encourage all Vermonters to familiarize themselves with some of the most common online sources of this data.

Vermonters will find community profiles with data from assorted sources at:

- **Vermont Indicators Online** – <http://uvm.edu/crs/indicators> and
- **Vermont Housing Data** – www.housingdata.org

Direct access to many of the agencies that produce the indicators can also be found at:

- the US Census Bureau's American FactFinder – <http://factfinder2.census.gov>
- the Vermont Dept. of Labor's Covered Employment & Wages report – www.vtlmi.info/indnaics.htm
- the Vermont Dept. of Labor's Labor Force & Unemployment site – www.vtlmi.info/labforce.cfm
- the Vermont Dept. of Taxes' statistics site – www.state.vt.us/tax/statistics.shtml
- the Local Employment Dynamics site – <http://lehd.ces.census.gov/led/>
- the Vermont Crime Information Center – www.dps.state.vt.us/cjs/crimestats.htm and
- the USDA's Census of Agriculture – www.agcensus.usda.gov

The Center for Rural Studies at the University of Vermont is a nonprofit, fee-for-service research and resource center that works with people and communities to address social, economic, and resource-based challenges. A part of the University's College of Agriculture and Life Sciences since 1978, CRS supports the research and teaching missions of the university through its work in applied research, community outreach, program evaluation, and consulting services. CRS is also the US Census Bureau's State Data Center for Vermont.

Introduction

Area Comparisons

	Vergennes	Ferrisburgh	Bristol	Middlebury
2010 Population	2,588	2,775	2,030	6,588
FY 2014 Homestead Tax Rate	\$ 1.2622	\$ 1.2947	\$ 1.6052	\$1.7222
2012 Sales & Use Tax Receipts	\$ 19,363,164	\$ 5,853,456	\$ 14,491,647	\$ 92,448,355

Source: U.S. Census Bureau, 2010 Census and 2008-2012 American Community Survey; Vermont Department of Taxes

Vergennes displays a unique set of socio-demographic characteristics as compared to many other Vermont communities. The researchers made efforts to include comparisons to other communities within the region with similar population characteristics as well as to other communities in the state that display economic characteristics similar to those of Vergennes.

Civic Statistics

Year Town Incorporated or Chartered	1788
Type of Entity	Municipality - City
County	Addison County
Regional Planning Commission	Addison County Regional Planning Commission
Incorporated Villages	--
Municipal Plan	Yes
...approved by Regional Planning Commission	Yes
Zoning Ordinance	Yes
Subdivision Ordinance	Yes
Development Review Board	No
Development Category	1 - Traditional Center

Source: Vermont Indicators Online: Civics & Planning

Population Demographics

Median Age

	Census 2000	Census 2010
Vergennes	32.7	36.9
Addison County	36.1	41.3
Vermont	37.7	41.5

Source: US Census Bureau, 2000 and 2010 Census

Native Vermonters

65.6 % of Vergennes residents are native to Vermont, compared to 54.2% in Addison County and 51.2% across the state.

Source: US Census Bureau, 2008-2012 American Community Survey

Housing Characteristics

	Vergennes		Addison County		Vermont	
	2000	2010	2000	2010	2000	2010
Total Housing Units	1,032	1,072	15,312	16,760	294,382	322,539
...Owner Occupied	639	648	9,782	10,662	169,784	181,407
Owner occupied as percent of all housing	61.9%	60.4%	63.9%	63.6%	57.7%	56.2%
...Renter Occupied	340	346	3,286	3,422	70,850	75,035
Renter occupied as a percent of all housing	32.9%	32.3%	21.5%	20.4%	24.1%	23.3%
...Vacant (not seasonal, recreational)	48	63	498	842	10,688	15,899
Vacant (not seasonal/rec.) as a percent of all housing	4.7%	5.9%	3.3%	5.0%	3.6%	4.9%
...for Seasonal, Recreational, or Occasional Use	5	15	1,746	1,834	43,060	50,198
Seasonal/recreational as a percent of all housing	0.5%	1.4%	11.4%	10.9%	14.6%	15.6%

Source: US Census Bureau, 2000 and 2010 Census

Home Sale Prices

	2008-2012 Media Home Value	% of Vergennes Median Home Value
Vergennes	\$188,700	100%
Addison County	\$235,500	124.8%
Vermont	\$215,800	114.4%

Source: US Census Bureau, 2008-2012 American Community Survey

Housing Costs

	Vergennes	Addison County	Vermont
Households with a mortgage... percent with housing costs at or above 35% of household income	31.3%	21.2%	18.5%
Renter Households... percent with housing costs at or above 35% of household income	22.0%	37.5%	41.6%
Housing Stock Built Before 1980	71.0%	63.6%	62.2%

Source: US Census Bureau, 2008-2012 American Community Survey

Accessibility and Transportation

Residents with Disabilities

	Vergennes	Addison County	Vermont
Residents with Disability Status	7.3 %	3.7 %	3.8 %
Residents with Ambulatory Difficulty	7.6 %	2.8 %	2.8 %

Source: US Census Bureau, 2008-2012 American Community Survey

Transportation to Work

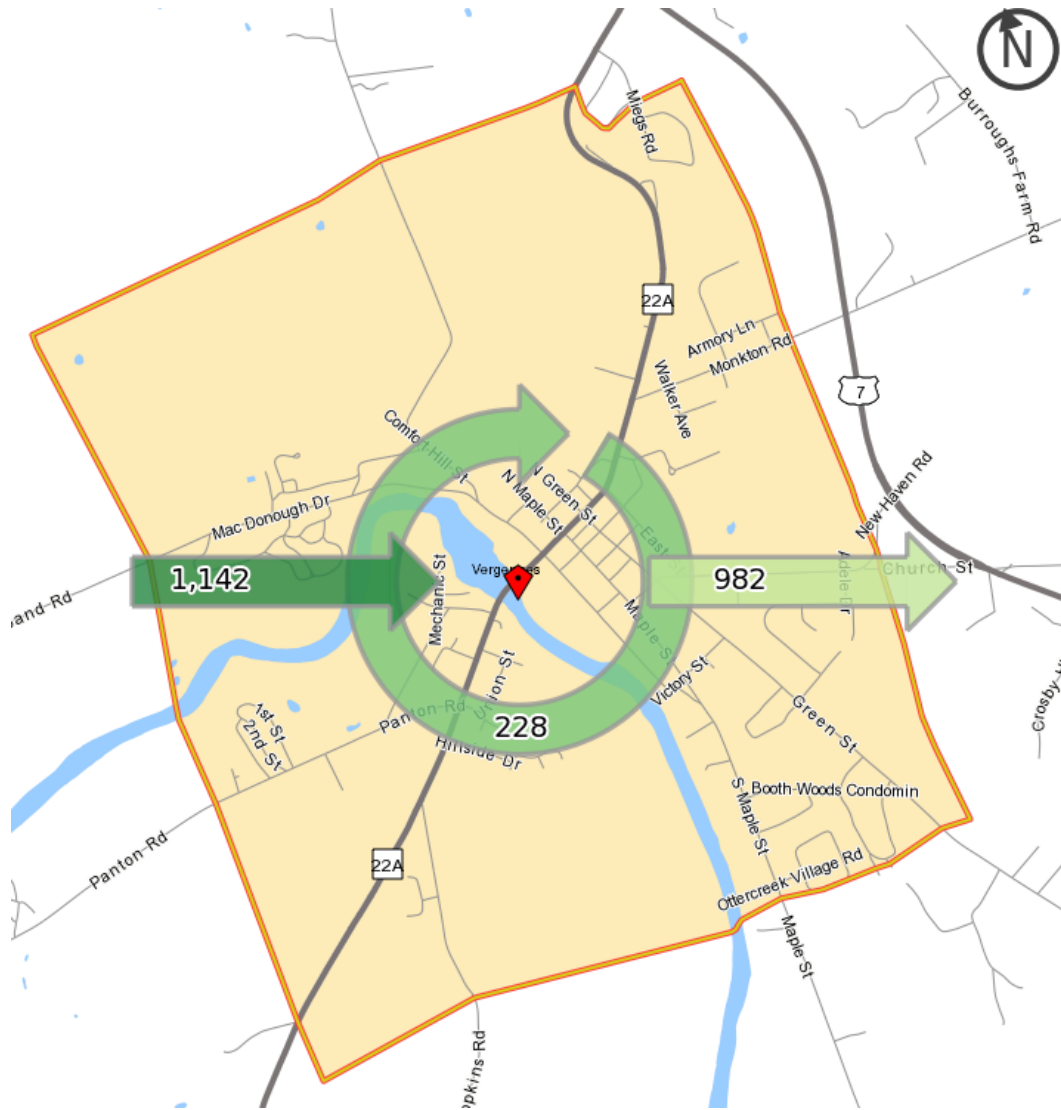
	Vergennes	Addison County	Vermont
Use of Public Transportation	0.2 %	1.0 %	1.1 %
Access to at least 1 vehicle	95.8 %	98.0 %	98.0 %
Travel Time to Work of 30 minutes or more	36.6%	34.6 %	28.7 %

Source: US Census Bureau, 2008-2012 American Community Survey

Note: All figures are for Workers over 16 years of age in households.

The Vergennes Labor Force

Vergennes Labor Force, Inflow/Outflow Chart:



Vergennes Regional Employment, 2012		
	Count	Percent
Employed in Vergennes	1,370	100.0%
Employed and Living in Vergennes	228	16.6%
Employed in Vergennes but Living Outside	1,142	83.4%

Vergennes Labor Force Efficiency, 2012		
	Count	Percent
Living in Vergennes	1210	100.0%
Living and Employed in Vergennes	228	18.8%
Living in Vergennes but Employed Outside	982	81.2%

Source: US Census Bureau, Center for Economic Studies

Note: Figures reflect movement of people traveling to primary jobs only.

The Daily Commute: Where Residents Work

	Count	Percent
Vergennes city	228	18.8%
Middlebury CDP	148	12.2%
Burlington city	126	10.4%
South Burlington city	103	8.5%
Essex Junction village	25	2.1%
Bristol CDP	16	1.3%
Rutland city	14	1.2%
Waterbury village	13	1.1%
Brattleboro CDP	11	0.9%
Shelburne CDP	9	0.7%
All Other Locations	517	42.7%
Total	1,210	100.0%

Source: US Census Bureau, Center for Economic Studies

Note: Figures reflect movement of people traveling to primary jobs only.

The Vergennes Labor Shed: Where Vergennes Workers Come From

	Count	Percent
Vergennes city	228	16.6%
South Burlington city	62	4.5%
Burlington city	36	2.6%
Middlebury CDP	33	2.4%
Bristol CDP	26	1.9%
Essex Junction village	16	1.2%
Ticonderoga CDP (NY)	14	1.0%
Port Henry village (NY)	10	0.7%
Mineville CDP (NY)	8	0.6%
East Middlebury CDP	7	0.5%
All Other Locations	930	67.9%
Total	1,370	100.0%

Source: US Census Bureau, Center for Economic Studies

Note: Figures reflect movement of people traveling to primary jobs only.

Industry by Sectors

The following industry sector tables show that the industry with the highest number of jobs in Vergennes is Manufacturing (16%) followed by Retail Trade, Health Care and Education. Education in particular experienced a jump of more than 4 percentage points from 2002 to 2011. Manufacturing saw a noticeable drop from 19.3% in 2002 to 16.0% in 2011, but the presence of manufacturing jobs remains well above the state average of 11.3%.

The top four sectors in which Vergennes residents work (whether in town or elsewhere) are:

Retail Trade: 18.3%

Accommodation & Food Service: 17.2%

Education services: 11.3%

Health Care & Social Assistance: 11.1%

These numbers indicate a sizable number of Vergennes residents leave town for jobs in Accommodation & Food Service, while a similar number come to Vergennes from elsewhere to work in Manufacturing jobs in town.

Jobs in Vergennes by Industry Sector, 2002 vs. 2011

Jobs by NAICS Industry Sector	2002		2011		VT 2011
	Count	Percent	Count	Percent	Percent
Agriculture, Forestry, Fishing and Hunting	30	2.5%	12	1.0%	0.8%
Mining, Quarrying, and Oil and Gas Extraction	2	0.2%	0	0.0%	0.2%
Utilities	8	0.7%	7	0.6%	0.7%
Construction	42	3.5%	43	3.6%	4.6%
Manufacturing	235	19.3%	194	16.0%	11.3%
Wholesale Trade	41	3.4%	30	2.5%	3.5%
Retail Trade	200	16.5%	192	15.9%	12.6%
Transportation and Warehousing	48	4.0%	30	2.5%	2.6%
Information	21	1.7%	12	1.0%	1.9%
Finance and Insurance	35	2.9%	41	3.4%	3.3%
Real Estate and Rental and Leasing	12	1.0%	14	1.2%	1.0%
Professional, Scientific, and Technical Services	35	2.9%	58	4.8%	5.3%
Management of Companies and Enterprises	0	0.0%	7	0.6%	0.6%
Admin & Support, Waste Mngmt and Remediation	26	2.1%	26	2.1%	3.2%
Educational Services	117	9.6%	172	14.2%	13.4%
Health Care and Social Assistance	194	16.0%	183	15.1%	16.9%
Arts, Entertainment, and Recreation	16	1.3%	12	1.0%	1.2%
Accommodation and Food Services	75	6.2%	78	6.4%	8.6%
Other Services (excluding Public Administration)	33	2.7%	50	4.1%	2.8%
Public Administration	45	3.7%	49	4.0%	5.4%

Source: US Census Bureau, Center for Economic Studies

Note: Figures reflect movement of people traveling to primary jobs only.

Industry Sectors in Which Vergennes Residents Work, 2002 vs. 2011

Jobs by NAICS Industry Sector	2002		2010		VT 2010
	Count	Percent	Count	Percent	Percent
Agriculture, Forestry, Fishing and Hunting	6	0.5%	5	0.4%	0.8%
Mining, Quarrying, and Oil and Gas Extraction	2	0.2%	4	0.3%	0.2%
Utilities	3	0.2%	10	0.7%	0.7%
Construction	45	3.7%	57	4.1%	4.3%
Manufacturing	141	11.5%	77	5.5%	11.6%
Wholesale Trade	35	2.9%	28	2.0%	3.4%
Retail Trade	269	21.9%	255	18.3%	12.8%
Transportation and Warehousing	11	0.9%	14	1.0%	2.3%
Information	24	2.0%	32	2.3%	2.0%
Finance and Insurance	49	4.0%	52	3.7%	3.4%
Real Estate and Rental and Leasing	11	0.9%	28	2.0%	0.9%
Professional, Scientific, and Technical Services	47	3.8%	61	4.4%	5.1%
Management of Companies and Enterprises	1	0.1%	50	3.6%	0.4%
Admin & Support, Waste Mngmt & Remediation	34	2.8%	29	2.1%	2.9%
Educational Services	136	11.1%	157	11.3%	14.1%
Health Care and Social Assistance	108	8.8%	154	11.1%	16.9%
Arts, Entertainment, and Recreation	25	2.0%	63	4.5%	1.1%
Accommodation and Food Services	196	16.0%	239	17.2%	8.7%
Other Services (excluding Public Administration)	61	5.0%	42	3.0%	2.8%
Public Administration	22	1.8%	33	2.4%	5.7%

Source: US Census Bureau, Center for Economic Studies

Note: Figures reflect movement of people traveling to primary jobs only.

Income & Poverty

Incomes earned by households in Vergennes were lower than Addison County and the State in 1999, and in the 2008-2012 samples.

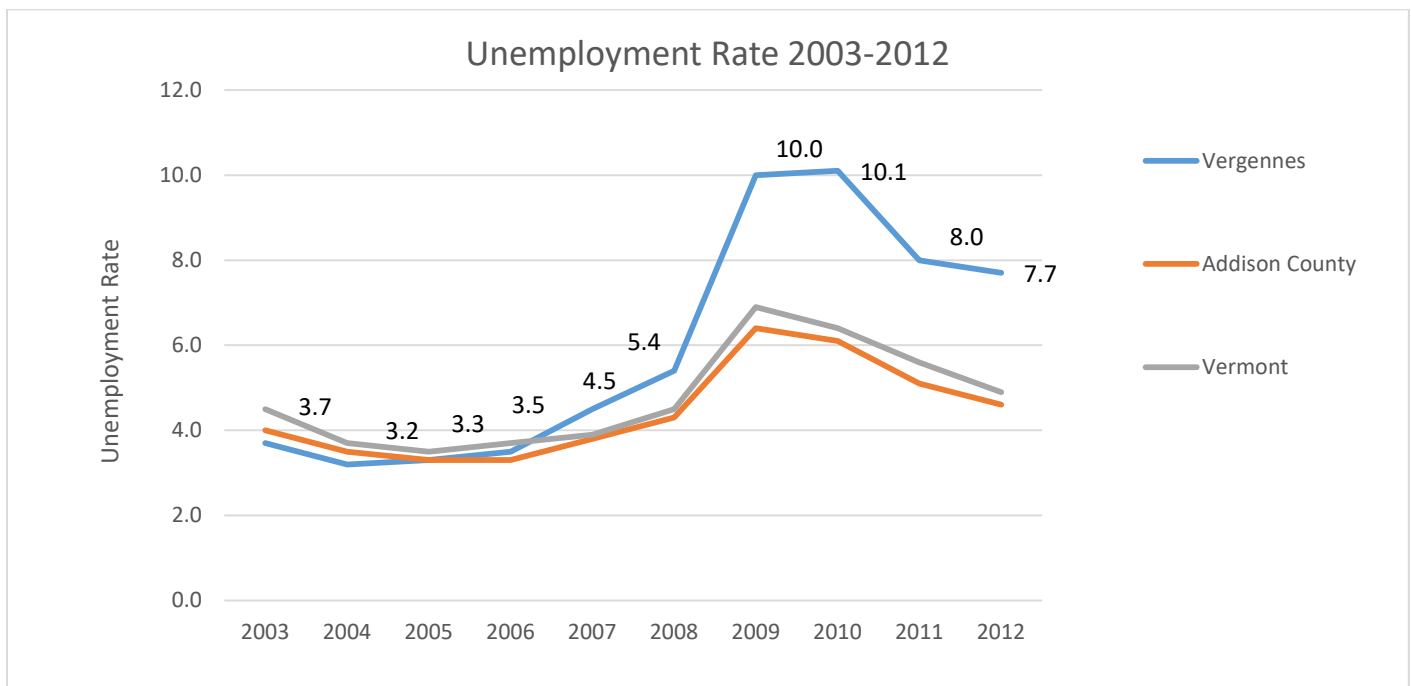
Median Household Income

	2000 Census (1999 Income)	2008-2012 ACS (Multi-Year Estimate)
Vergennes City	\$ 37,763	\$ 51,635
Addison County	\$ 43,142	\$ 57,335
Vermont	\$ 40,856	\$ 52,977

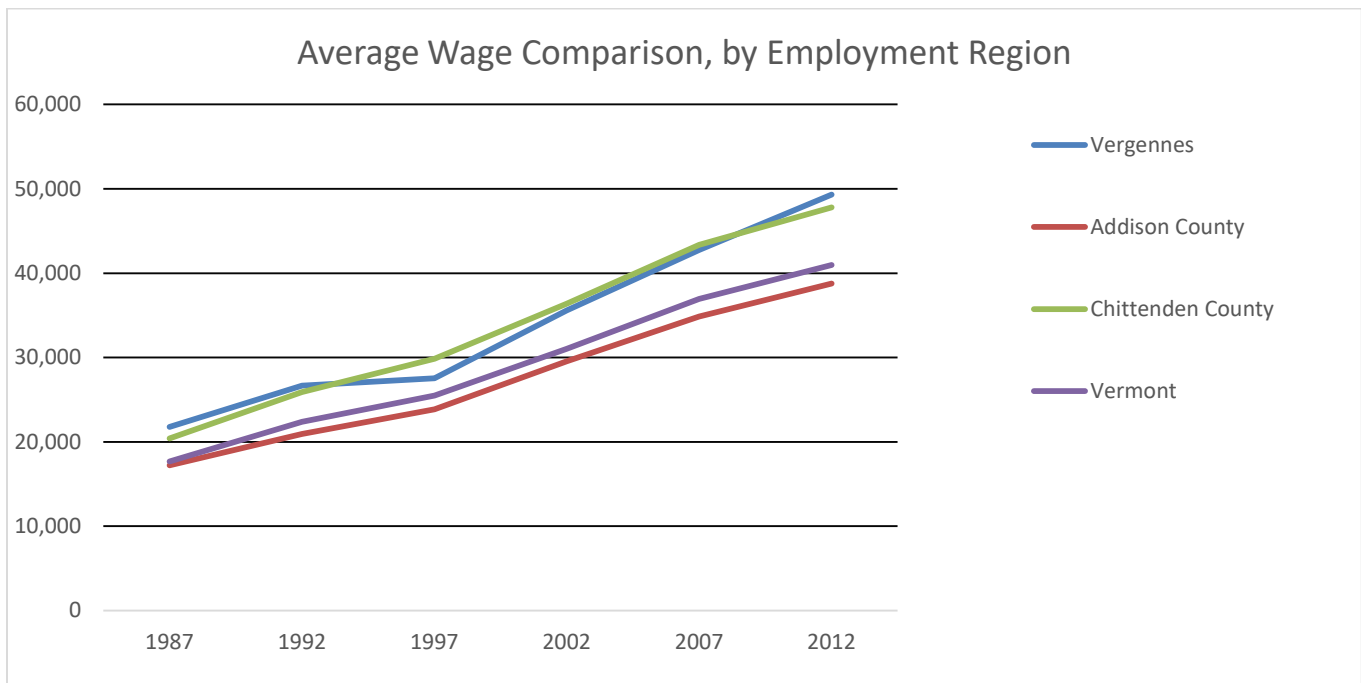
Source: U.S. Census Bureau, 2000 Census of Population and Housing & 2008-2012 American Community Survey

Note: These data reflect gross income from all sources.

Unemployment



Average Wages



Source: Vermont Dept. of Labor

Notes: These are the average wages paid by employers in the given locations – e.g. not all Addison residents earn Addison wages. These numbers are LIMITED to employers that pay Unemployment Insurance. The numbers are NOT adjusted for inflation.

The average annual wages paid by Vergennes employers historically track closely with wages paid by Chittenden County employers, and are higher than the Addison County and Vermont average annual wages.

Poverty Rate

	1989	1999	2008-2012 ACS
Vergennes	NA	17.0%	16.3%
Addison County	9.7%	8.6%	11.1%
Vermont	9.9%	9.4%	11.6%

Source: US Census Bureau, Census of Population and Housing and American Community Survey

Note: Data for 1989 and 1999 was collected through the Decennial Census, versus the current standard of the American Community Survey 5-year estimate.

Vergennes' poverty rate, 16.3 %, is higher than the Addison County rate and the state average—Addison and Vermont levels are 11.1 % and 11.6%, respectively.

Source: Source: US Census Bureau, 2008-2012 American Community Survey

SNAP Benefits (Food Stamps)

% Households receiving food stamps	2005-2009 Estimate	2008-2012 Estimate
Vergennes	17.4 %	17.7 %
Addison County	8.4 %	12.3 %
Vermont	9.1 %	14.7 %

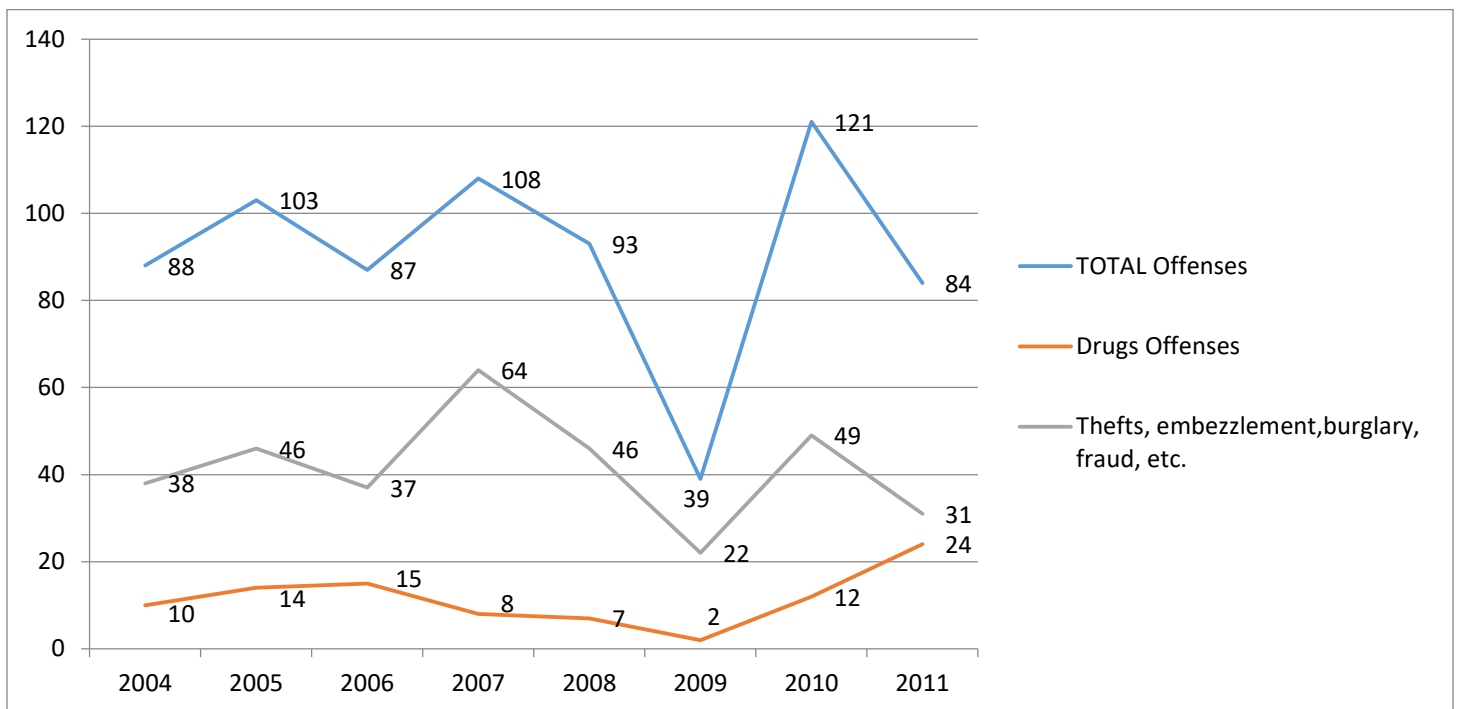
Source: US Census Bureau, 2008-2012 and 2005-2009 American Community Survey

Note: These data come from two five year estimates with two overlapping years.

17.7% of Vergennes households receive food stamps, in contrast to an Addison County rate of 12.3% and a Vermont rate of 14.7%. The number of Vergennes households receiving food stamps did not increase dramatically over the past four years, however, which compares favorably to significant increases across Addison County and statewide over the same period.

Public Safety

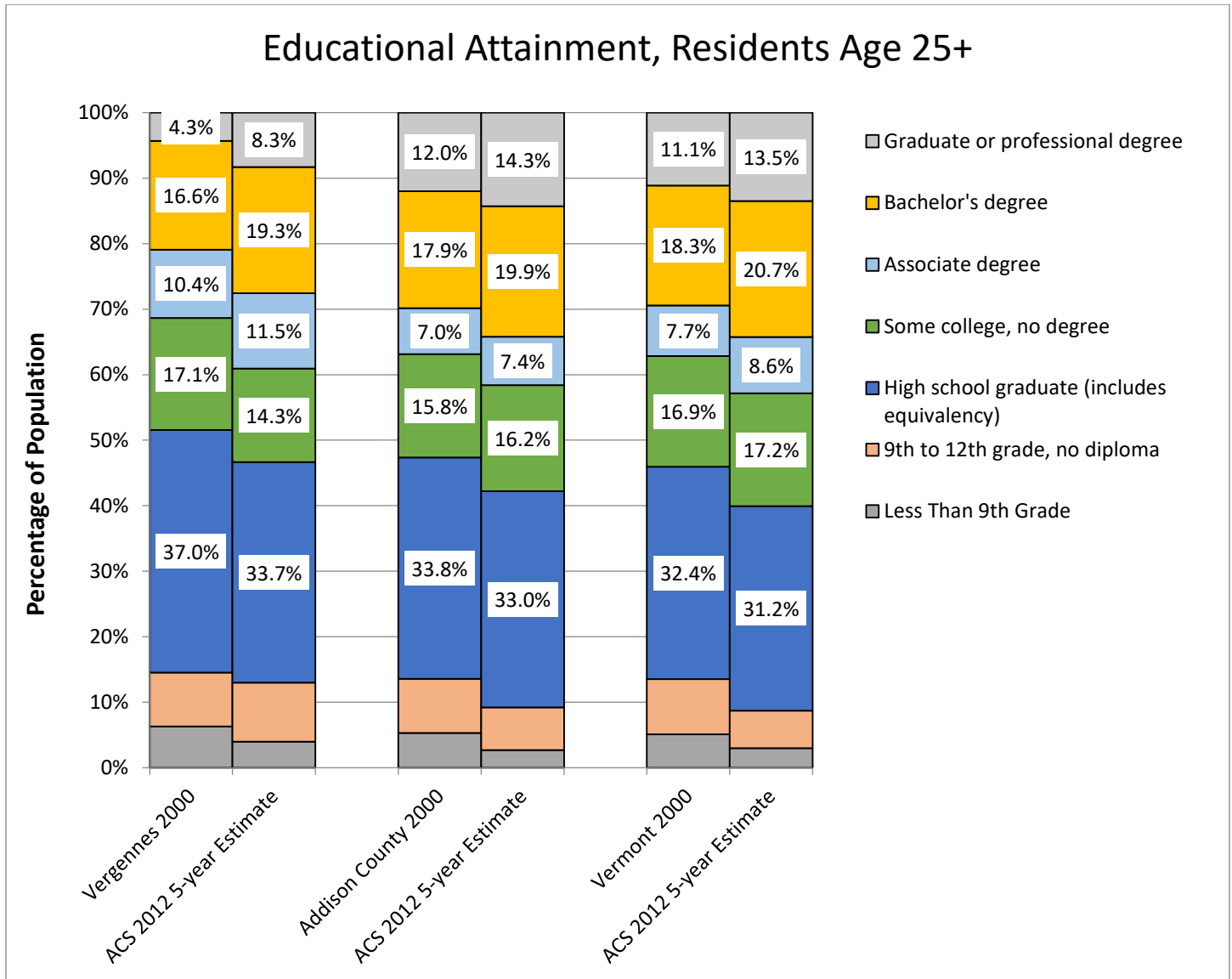
Crime over time



Source: Vermont Criminal Information Center and National Incident Based Reporting System (NIBRS)

National Incident-Based Reporting System (NIBRS) is an incident-based reporting system used by law enforcement agencies in the United States for collecting and reporting data on crimes. Local, state and federal agencies generate NIBRS data from their records management systems.

Education



Vergennes, like Addison County and Vermont, is seeing growth in the portion of the population that is achieving higher levels of educational attainment.