

Cabot, Vermont

Community Data Profile

Prepared for the Cabot Community Visit
September 25, 2012

Prepared by Julia Rumery and Michael Moser at the Center for Rural Studies

What follows is a collection of indicators and information on the town of Cabot and its residents. These data are meant to help inform the September 25th Cabot Community Visit by the Vermont Council on Rural Development, but they certainly have many other uses.

Most of these indicators have been produced by the US Census Bureau. Sources also include the Vermont Departments of Taxes and Labor, among others.

The UVM Center for Rural Studies engages in many projects to assist Vermonters in accessing and using community-level data for their towns, cities and villages. We encourage all Vermonters to familiarize themselves with some of the most common online sources of this data.

Vermonters will find community profiles with data from assorted sources at:

- **Vermont Indicators Online-** <http://www.uvm.edu/crs/indicators/>
- **Vermont Housing Data** – www.housingdata.org

Direct access to many of the agencies that produce the indicators can also be found at:

- the US Census Bureau's American FactFinder – <http://factfinder.census.gov>
- the Vermont Dept. of Labor's Covered Employment & Wages report – www.vtlmi.info/indnaics.htm
- the Vermont Dept. of Labor's Labor Force & Unemployment site – www.vtlmi.info/labforce.cfm
- the Vermont Dept. of Taxes' statistics site – www.state.vt.us/tax/statistics.shtml
- the Local Employment Dynamics site – <http://lehd.ces.census.gov/led/>
- the Vermont Crime Information Center – www.dps.state.vt.us/cjs/crimestats.htm and
- the USDA's Census of Agriculture – www.agcensus.usda.gov

Enjoy!



uvm.edu/crs
802-656-3021

The Center for Rural Studies at the University of Vermont is a nonprofit, fee-for-service research and resource center that works with people and communities to address social, economic, and resource-based challenges. A part of the University's College of Agriculture and Life Sciences since 1978, CRS supports the research and teaching missions of the university through its work in applied research, community outreach, program evaluation, and consulting services. CRS is also the US Census Bureau's State Data Center for Vermont.

Table of Contents

Civics	1
Population Demographics.....	1
Housing	5
Employment and Labor Force.....	7
Income & Poverty	11
Source: US Census Bureau, 2006-2010 American Community Survey	12
Education	13
Agriculture	14

Civics

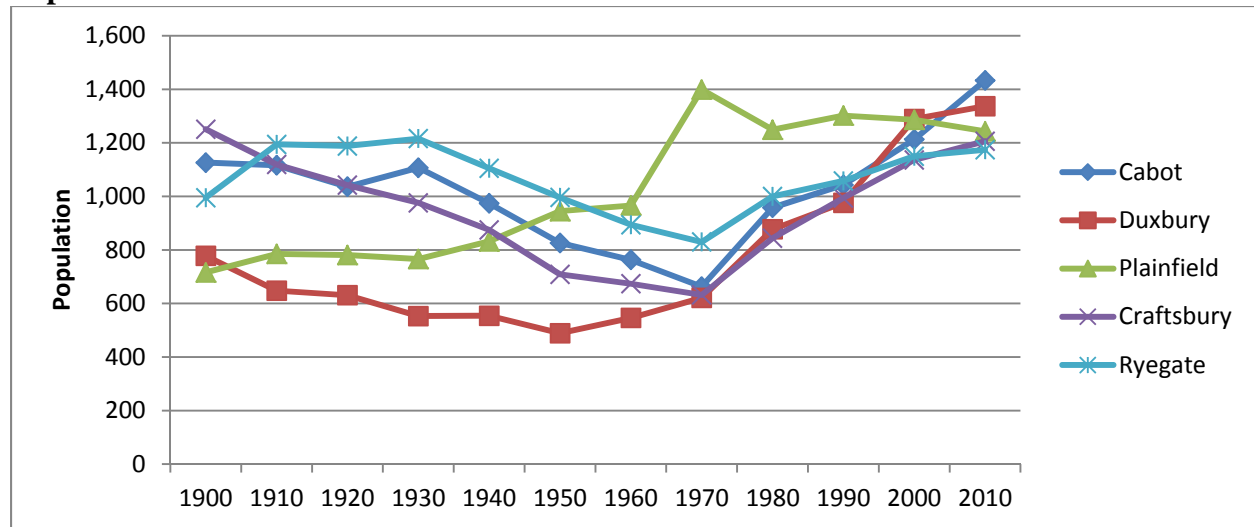
Cabot Civic Stats	
Year Town Incorporated or Chartered	1781
Type of Entity	Municipality - Town
County	Washington County
Regional Planning Commission	Central Vermont Regional Planning Commission
Incorporated Villages	Cabot Village
Municipal Plan	Yes
...approved by Regional Planning Commission	Yes
Zoning Ordinance	Yes
Subdivision Ordinance	No
Development Review Board	No
Development Category	3 – Outlying Town

Source: Vermont Indicators Online

Population Demographics

Cabot's population had been in decline from the early nineteen-hundreds to about 1970 when it began increasing quite quickly. This trend is similar to trends in similarly-sized towns around the region.

Population over Time - Cabot and Selected VT Communities of Similar Size

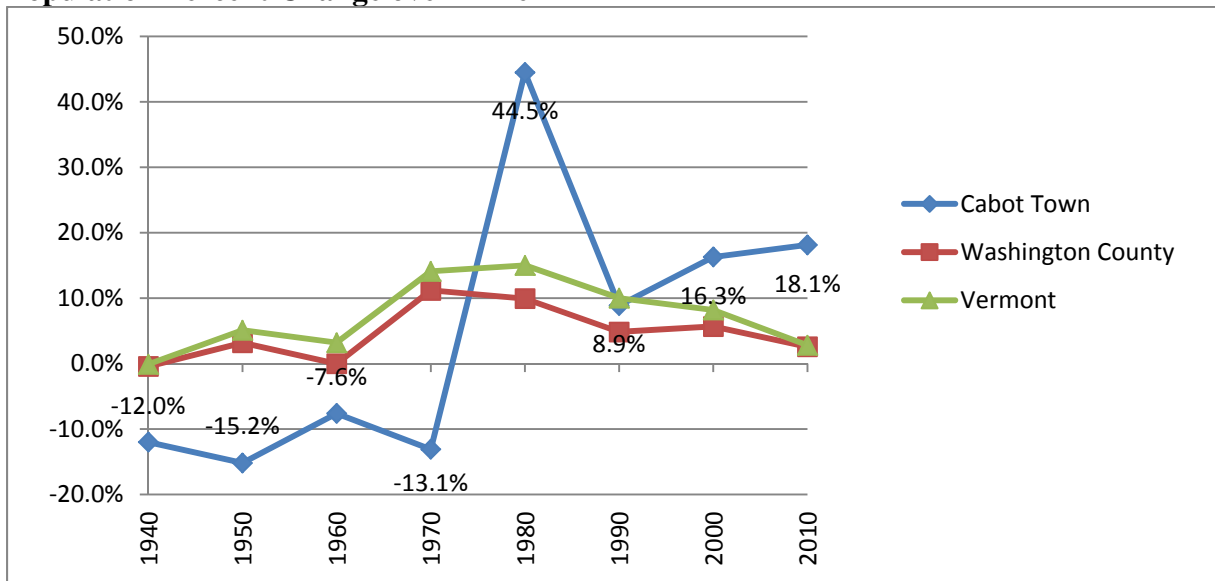


Sources: Vermont Indicators Online, US Census Bureau, 2010 Census

Cabot's population over time- 1900-2010

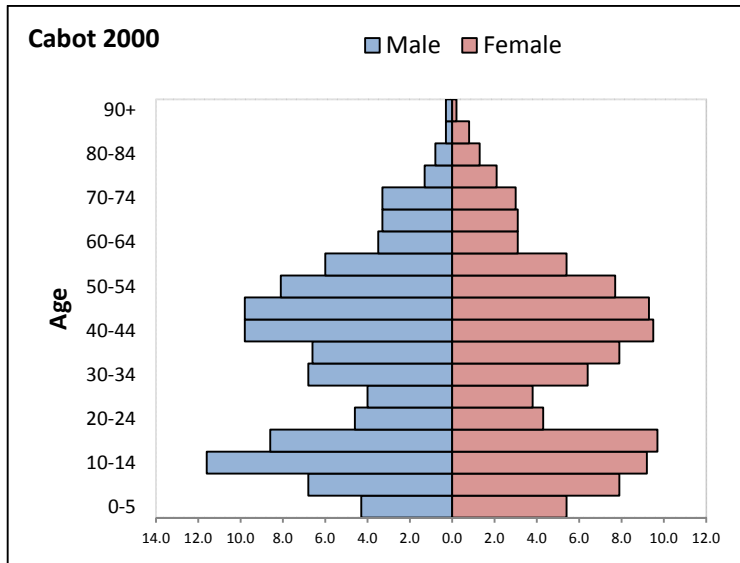
1900	1910	1920	1930	1940	1950	1960	1970	1980	1990	2000	2010
1,126	1,116	1,036	1,107	974	826	763	663	958	1,043	1,213	1,433

Population Percent Change over Time

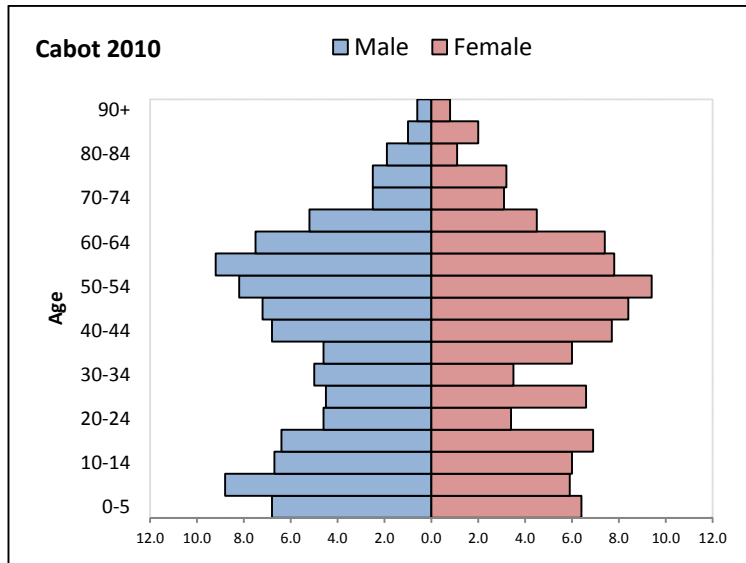


Sources: Vermont Indicators Online, US Census Bureau, 2010 Census

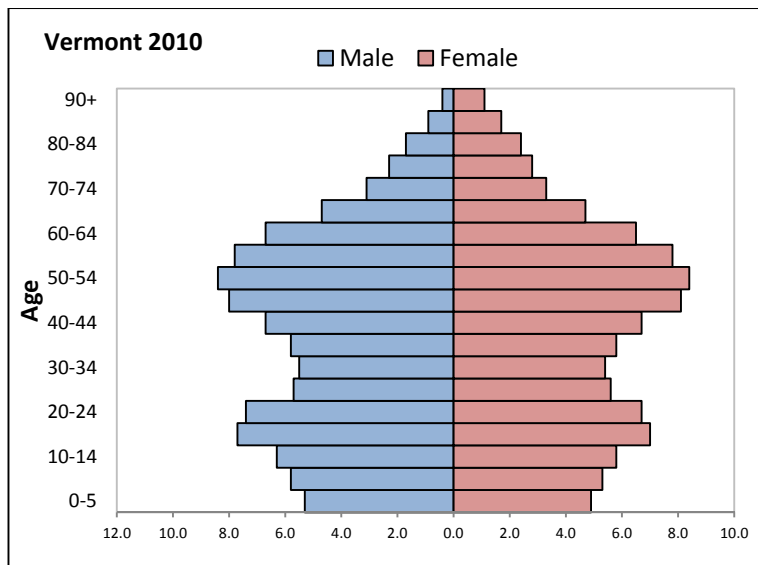
Population Pyramids



Source: US Census Bureau, Census 2000 and Census 2010



Cabot's population pyramid is typical of towns across Vermont. One can see the "Baby Boom Bulge," which is roughly the 40-60 age groups in both Cabot and Vermont in 2010. Below the Baby Boom Bulge we see the echo effect of that generation's children within the population.



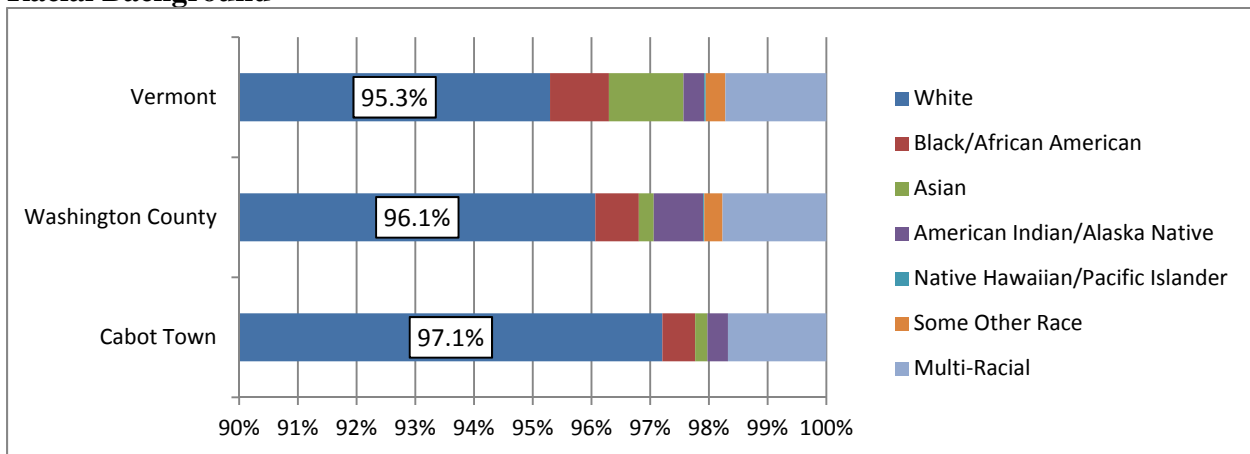
Median Age

	Census 2000	Census 2010
Cabot Town	37.9	43.0
Washington County	38.5	42.3
Vermont	37.7	41.5

Source: US Census Bureau, 2000 Census and 2010 Census

Census data from 2000 and 2010 shows that the median age in Cabot increased between 2000 and 2010. The median age went from being about the same as the state and below the county, to being higher than both.

Racial Background



*Note that this table begins at 90%

Source: US Census Bureau, 2010 Census

Cabot's racial background does not vary significantly from the County's or the State's in 2010. Those who claimed white race alone represent the vast majority for all. Vermont has slightly higher proportions of other races than the town and county. This is a result of the inclusion of more urban and traditionally diverse areas of the state such as Chittenden County.

Native Vermonters

From 2006-2010 61.2% of Cabot residents were native to Vermont, compared to 55.6% in the county and 51.5% across the state.

Source: US Census Bureau, 2006-2010 American Community Survey

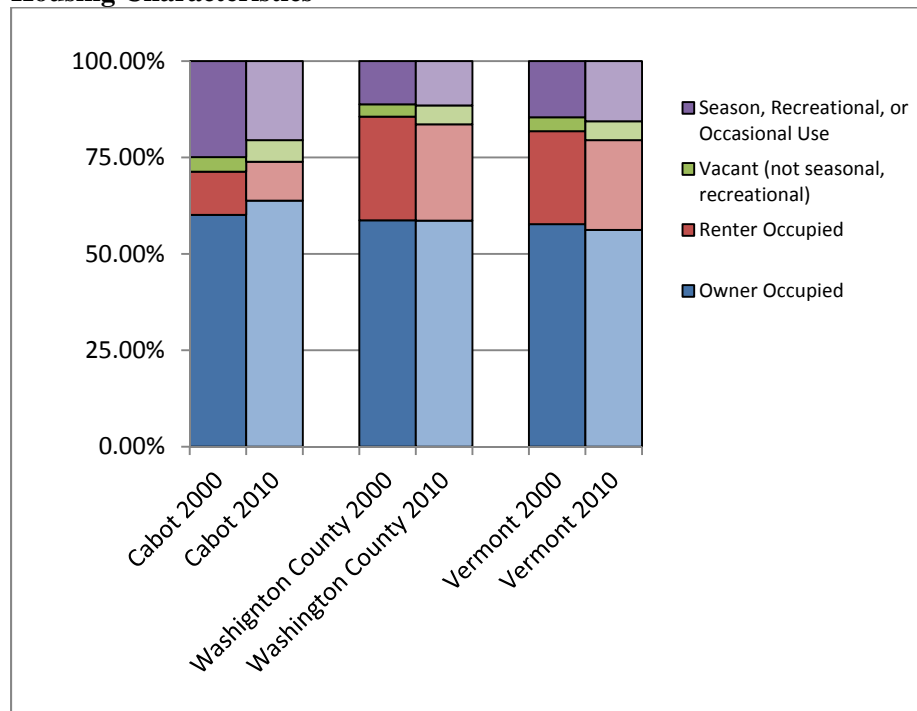
Housing

Cabot had a lower proportion of rental units and a higher proportion of seasonal units than the county and state in 2000 and 2010. The town's housing prices have been tracking below county and state averages, except in 2010 when average primary residence sale prices peaked above the county level.

Cabot Housing Statistics	Cabot Town		Washington County		Vermont	
	2000	2010	2000	2010	2000	2010
Total Housing Units	634	771	27,644	29,941	294,382	322,539
Owner Occupied	381	492	16,218	17,540	169,784	181,407
<i>Owner occupied as percent of all housing</i>	60.1%	63.8%	58.7%	58.6%	57.7%	56.2%
Renter Occupied	71	78	7,441	7,487	70,850	75,035
<i>Renter occupied as a percent of all housing</i>	11.2%	10.1%	26.9%	25.0%	24.1%	23.3%
Vacant (not seasonal, recreational)	24	43	887	1,460	10,688	15,899
<i>Vacant (not seasonal/rec.) as a percent of all housing</i>	3.8%	5.6%	3.2%	4.9%	3.6%	4.9%
Vacant (seasonal, recreational, occasional use)	158	158	3,098	3,454	43,060	50,198
<i>Seasonal/recreational as a percent of all housing</i>	24.9%	20.5%	11.2%	11.5%	14.6%	15.6%

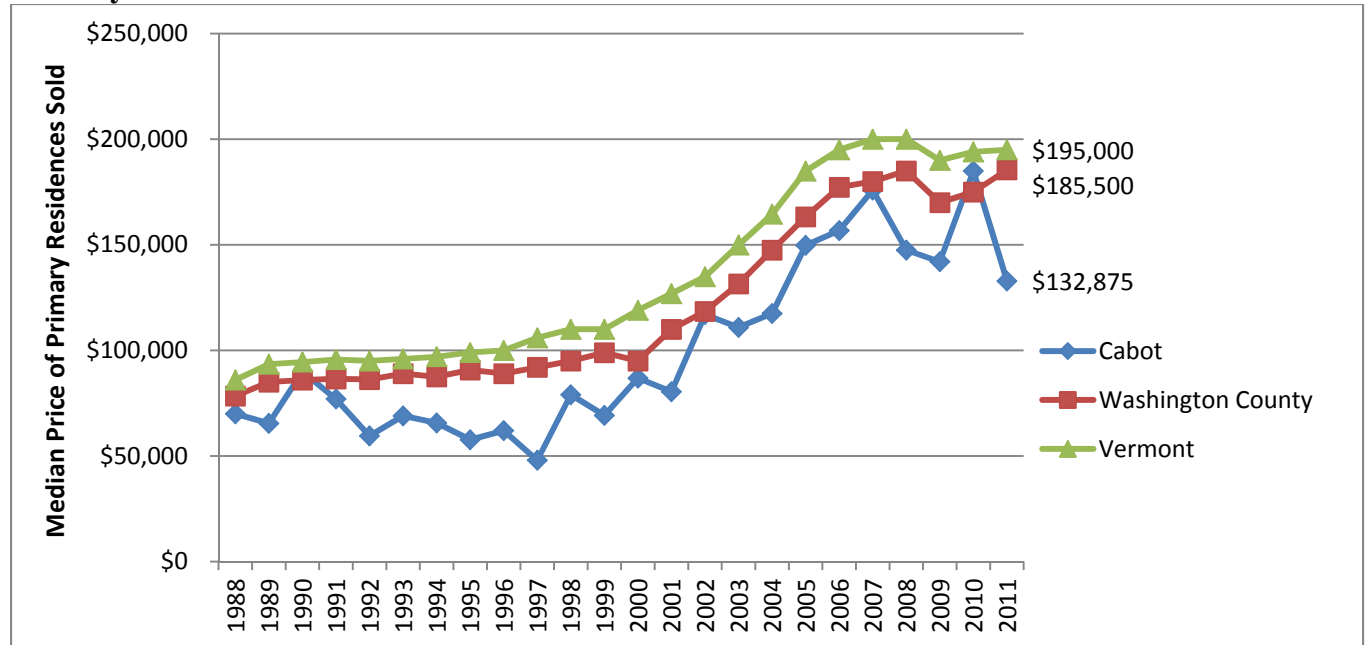
Source: US Census Bureau, 2010 Census

Housing Characteristics



Source: US Census Bureau, 2010 Census

Primary Residence Sale Prices



Source: Vermont Dept. of Taxes, calculated by Vermont Housing Finance Agency
 Note: Numbers are NOT adjusted for inflation

Housing Costs, 2006-2010 Combined Estimates

	Cabot		Washington County		Vermont	
	Estimate	MoE	Estimate	MoE	Estimate	MoE
Number of Households with a Mortgage	317	+/-46	12,339	+/-543	123,005	+/-1,397
... median monthly housing costs	1,273	+/-141	1,441	+/-43	1,467	+/-10
... percentage of households with housing costs at or above 35% of household income	24.6%	+/-7.6	27.4%	+/-2.9	28.0%	+/-0.6
Number of Households without a Mortgage	211	+/-49	5,528	+/-415	60,157	+/-1,070
... median monthly housing costs	505	+/-70	601	+/-26	580	+/-6
... percentage of households with housing costs at or above 35% of household income	34.9%	+/-15.9	16.6%	+/-4.0	17.9%	+/-0.8
Number of Renter Households	18	+/-12	6,146	+/-480	68,252	+/-1,285
... median monthly housing costs	631	+/-31	782	+/-41	809	+/-10
... percentage of households with housing costs at or above 35% of household income	22.2%	+/-27.3	34.8%	+/-5.7	40.6%	+/-1.1

Source: US Census Bureau, 2006-2010 American Community Survey
 Note: MoE = Margin of Error

Cabot's housing costs tended to be lower than the county's and state's within the period of 2006-2010. However discrete comparisons are hampered by the large margins of error.

Employment and Labor Force

The two tables below show the degree to which Cabot employs its own resident workers. The town imports the majority of its workers from elsewhere. Only 4.8% of working residents in Cabot work in town, and 87.6% of those who work in Cabot live elsewhere.

Cabot Labor Force Efficiency, 2010

	Count	Percent
Living in Cabot	463	100%
Living and Employed in Cabot	22	4.8%
Living in Cabot but Employed Outside	441	95.2%

Source: Local Employment Dynamics partnership of the US Census Bureau and Vermont Dept. of Labor

Note: Covers Primary Jobs, not all jobs.

Cabot Regional Employment, 2010

	Count	Percent
Employed in Cabot	177	100%
Employed and Living in Cabot	22	12.4%
Employed in Cabot but Living Outside	155	87.6%

Source: Local Employment Dynamics partnership of the US Census Bureau and Vermont Dept. of Labor

Note: Covers Primary Jobs, not all jobs.

The two following tables show that Cabot town and Washington County are highly linked in terms of labor force. For the daily commute, most of Cabot residents who work do so outside of town, but over 60% work in Washington County. Furthermore, over two-thirds of those employed in Cabot reside in Washington County.

The Daily Commute – Where Cabot Residents Work, 2010

	Count	Percent
Montpelier City	84	18.1%
Barre City	63	13.6%
Plainfield	45	9.7%
Marshfield	26	5.6%
Berlin	22	4.8%
Cabot	22	4.8%
Burlington City	21	4.5%
Waterbury	21	4.5%
Morristown	10	2.2%
South Burlington City	8	1.7%
All Other Locations	141	30.5%
Total	463	100.0%

Source: Local Employment Dynamics partnership of the US Census Bureau and Vermont Dept. of Labor

Note: Covers Primary Jobs, not all jobs.

The Cabot Labor Shed – Where Workers Commute from to Work in Cabot, 2010

	Count	Percent
Marshfield	32	18.1%
Plainfield	27	15.3%
Cabot	22	12.4%
East Montpelier	14	7.9%
Montpelier City	14	7.9%
Barre City	6	3.4%
Hardwick	5	2.8%
St. Johnsbury	4	2.3%
Middlesex	4	2.3%
Lancaster, NH	3	1.7%
All Other Locations	46	26.0%
Total	177	100.0%

Source: Local Employment Dynamics partnership of the US Census Bureau and Vermont Dept. of Labor

Note: Covers Primary Jobs, not all jobs.

Industry by Sectors

On the next page, the industry sector tables show that the industry with the highest number of jobs in Cabot (40.7%) is Educational Services. That is a slight drop from 41.7% in 2002. The next highest local job sector is Retail Trade (17.5%), down from 21.5% in 2002. The next highest local job sectors are Agriculture, Forestry, Fishing and Hunting and Other Services (excluding Public Administration) both representing 5.1% of jobs in Cabot. Construction was one of the top 4 job sectors in 2002 with 13.5%, but decreased to 3.4% in 2010.

The top four sectors in which Cabot residents work (whether in town or elsewhere) are:

1. Educational Services: 22.2%
2. Health Care and Social Assistance: 17.7%
3. Retail Trade: 11.4%
4. Public Administration: 10.2%

Manufacturing experienced a noticeable drop between 2002 and 2010, with the recession being a likely factor. Public Administration also dropped during that time period. Educational Services and Health Care and Social Assistance saw increases between 2002 and 2010.

Jobs in Cabot by Industry Sector, 2002 vs 2010

Jobs by NAICS Industry Sector	2002		2010		VT 2010
	Count	Percent	Count	Percent	Percent
Agriculture, Forestry, Fishing and Hunting	0	0.0%	9	5.1%	0.8%
Mining, Quarrying, and Oil and Gas Extraction	0	0.0%	0	0.0%	0.2%
Utilities	0	0.0%	0	0.0%	0.8%
Construction	22	13.5%	6	3.4%	4.4%
Manufacturing	3	1.8%	0	0.0%	11.7%
Wholesale Trade	22	13.5%	26	14.7%	3.5%
Retail Trade	35	21.5%	31	17.5%	12.6%
Transportation and Warehousing	0	0.0%	2	1.1%	2.4%
Information	0	0.0%	1	0.6%	2.0%
Finance and Insurance	1	0.6%	0	0.0%	3.4%
Real Estate and Rental and Leasing	0	0.0%	1	0.6%	0.9%
Professional, Scientific, and Technical Services	8	4.9%	5	2.8%	5.1%
Management of Companies and Enterprises	0	0.0%	0	0.0%	0.3%
Admin & Support, Waste Mngmt and Remediation	0	0.0%	2	1.1%	2.8%
Educational Services	68	41.7%	72	40.7%	13.6%
Health Care and Social Assistance	0	0.0%	13	7.3%	16.6%
Arts, Entertainment, and Recreation	0	0.0%	0	0.0%	1.1%
Accommodation and Food Services	0	0.0%	0	0.0%	9.1%
Other Services (excluding Public Administration)	4	2.5%	9	5.1%	2.8%
Public Administration	0	0.0%	0	0.0%	5.8%

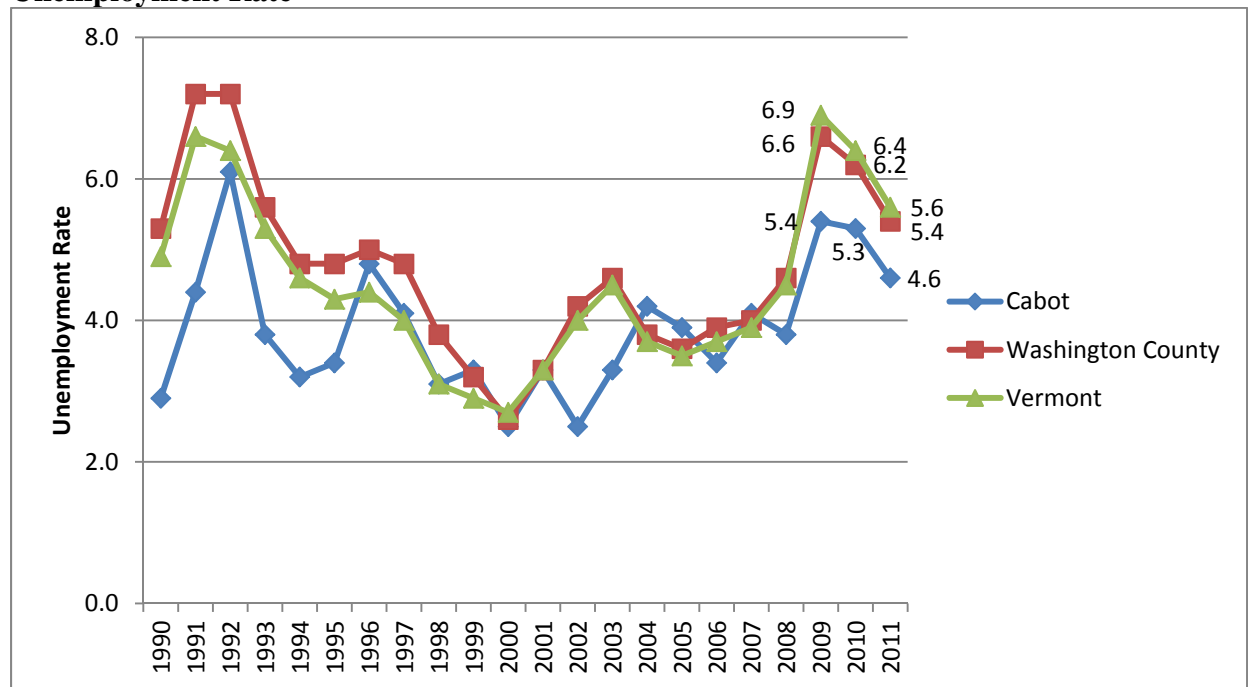
Source: Local Employment Dynamics partnership of the US Census Bureau and Vermont Dept. of Labor

Industry Sectors in Which Cabot Residents Work, 2002 vs 2010

Jobs by NAICS Industry Sector	2002		2010		VT 2010
	Count	Percent	Count	Percent	Percent
Agriculture, Forestry, Fishing and Hunting	1	0.2%	0	0.0%	0.8%
Mining, Quarrying, and Oil and Gas Extraction	4	0.8%	0	0.0%	0.2%
Utilities	1	0.2%	0	0.0%	0.7%
Construction	19	3.8%	12	2.6%	4.3%
Manufacturing	53	10.5%	36	7.8%	11.6%
Wholesale Trade	13	2.6%	14	3.0%	3.4%
Retail Trade	63	12.5%	53	11.4%	12.8%
Transportation and Warehousing	9	1.8%	8	1.7%	2.3%
Information	7	1.4%	5	1.1%	2.0%
Finance and Insurance	26	5.2%	26	5.6%	3.4%
Real Estate and Rental and Leasing	4	0.8%	6	1.3%	0.9%
Professional, Scientific, and Technical Services	16	3.2%	16	3.5%	5.1%
Management of Companies and Enterprises	0	0.0%	0	0.0%	0.4%
Admin & Support, Waste Mngmt & Remediation	14	2.8%	10	2.2%	2.9%
Educational Services	87	17.3%	103	22.2%	14.1%
Health Care and Social Assistance	66	13.1%	82	17.7%	16.9%
Arts, Entertainment, and Recreation	5	1.0%	1	0.2%	1.1%
Accommodation and Food Services	28	5.6%	29	6.3%	8.7%
Other Services (excluding Public Administration)	21	4.2%	15	3.2%	2.8%
Public Administration	67	13.3%	47	10.2%	5.7%

Source: Local Employment Dynamics partnership of the US Census Bureau and Vermont Dept. of Labor

Unemployment Rate



Source: US Dept. of Labor

Cabot's unemployment rate has historically tracked at the same level or below that of the state and county, except for a short period in 2004 and 2005 when it increased above both state and county rates. In 2009, the town's rate peaked at 5.4%, much lower than the state's and county's rates. The 2010 and 2011 data reveal a downward trend from what will hopefully be the highest point of this most recent economic recession.

Income & Poverty

Incomes earned by households in Cabot continue to remain lower than those within the county and the state, overall. Comparing these changes over time is difficult due to the lack of adjustment for inflation in the available 2006-2010 data.

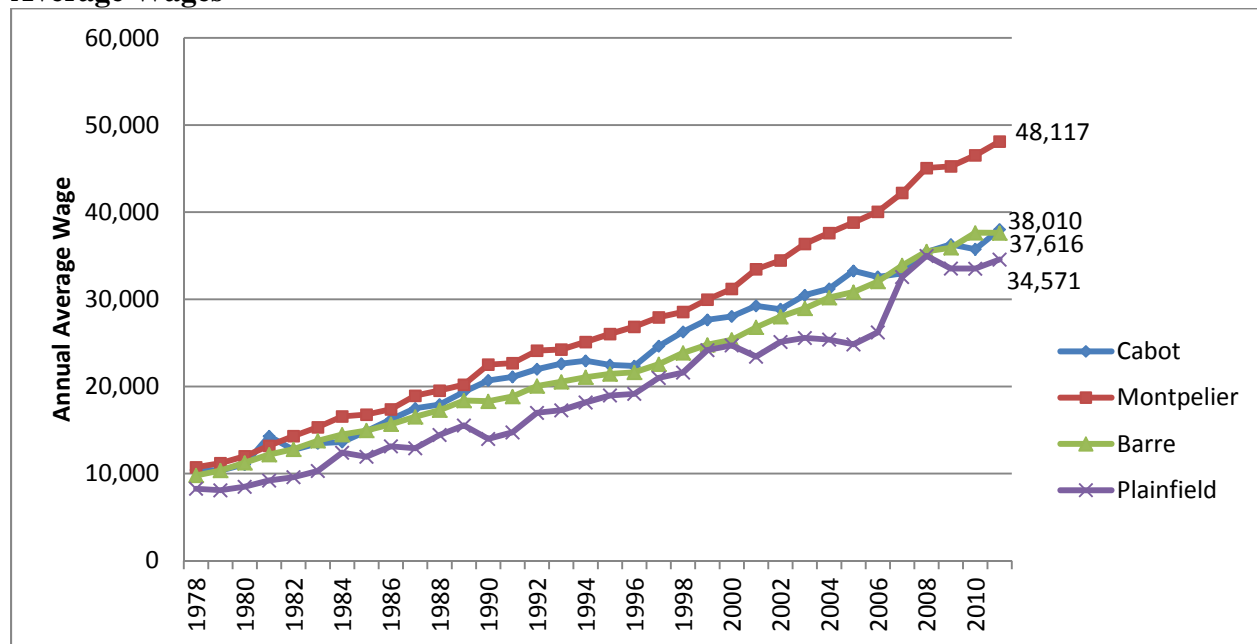
Median Household Income

	1999 (Not Adjusted for Inflation)	2006-2010
Cabot	43,092	47,167
Washington County	40,972	55,313
Vermont	40,856	51,841

Sources: U.S. Census Bureau, 2000 Census of Population and Housing and 2006-2010 American Community Survey

Note: These data reflect gross income from all sources.

Average Wages

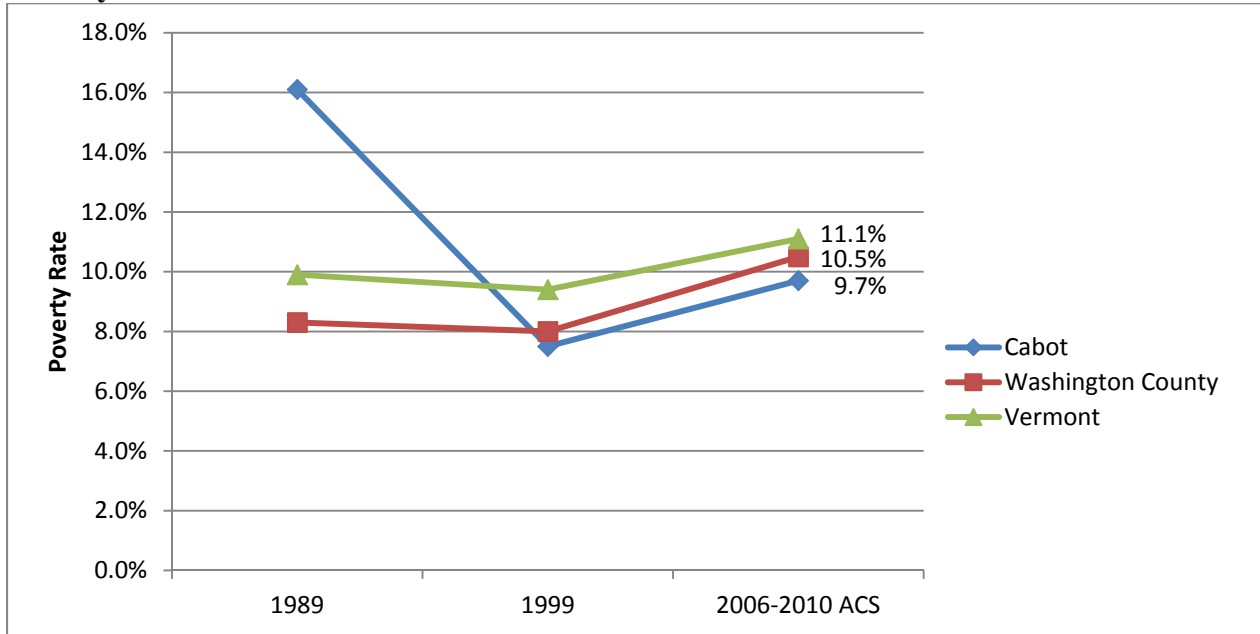


Source: Vermont Dept. of Labor

Notes: These are the average wages paid by employers in the given locations – e.g. not all Cabot residents earn Cabot wages. These numbers are LIMITED to employers that pay Unemployment Insurance. The numbers are NOT adjusted for inflation.

The previous chart lists the average wages earned by jobs in Cabot and the top three towns that Cabot workers commuted to in 2010. Note that these are averages of ALL wages paid in these towns, and not specifically the wages earned by Cabot residents.

Poverty



Source: US Census Bureau, Census of Population and Housing, and American Community Survey

Cabot’s poverty rate decreased significantly between the 1990 and 2000 Census. Since then, it has tracked below the state and county levels.

Over the period 2006-2010, Cabot has a significantly lower child poverty rate than the county and state.

Child (Individuals under 18) Poverty Rate

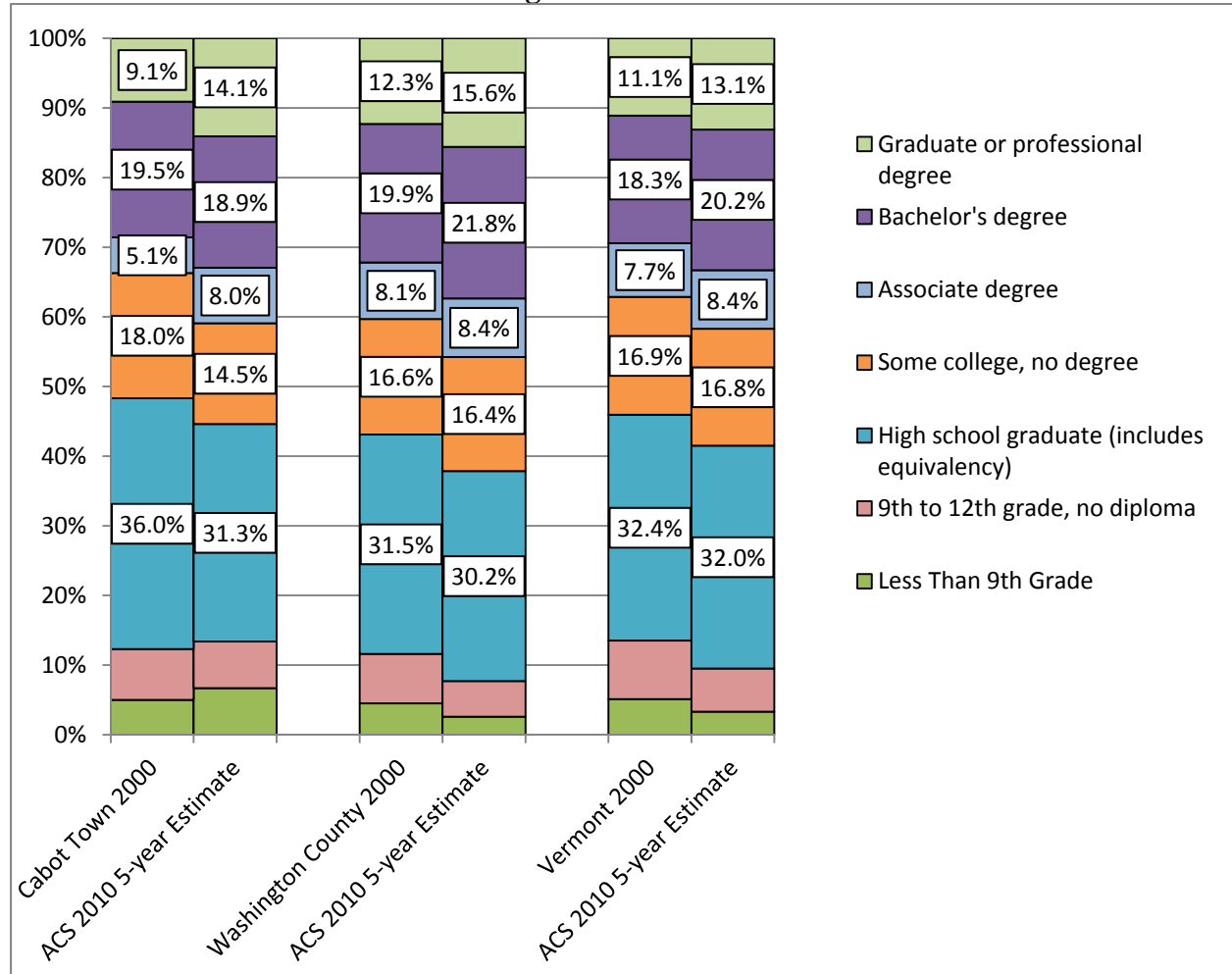
	Estimate
Vermont	13.7%
Washington County	13.8%
Cabot	7.6%

Source: US Census Bureau, 2006-2010 American Community Survey

Education

In 2000, Cabot had a significantly higher high school graduation rate than county or state rates. In the American Community Survey five-year estimate period ending in 2010, Cabot's high school graduation rate is shown to have dropped and is slightly higher than the county rate and slightly lower than the state's rate overall. The percent of the population with graduate/professional degrees increased significantly over the same period to fall more in line with the county and state rates.

Educational Attainment – Residents Age 25+



Source: US Census Bureau, 2000 Census and 2006-2010 American Community Survey

Agriculture

Farm Inventory by County

	Number of farms			Acres of land in farms		
	2002	2007	% Change	2002	2007	% Change
Addison	676	773	14.3%	193,376	187,482	-3.0%
Bennington	228	226	-0.9%	41,126	36,580	-11.1%
Caledonia	505	531	5.1%	84,318	81,946	-2.8%
Chittenden	473	591	24.9%	76,679	83,382	8.7%
Essex	98	94	-4.1%	19,838	26,732	34.8%
Franklin	770	740	-3.9%	190,115	180,006	-5.3%
Grand Isle	99	114	15.2%	16,289	17,138	5.2%
Lamoille	317	300	-5.4%	53,820	49,749	-7.6%
Orange	680	683	0.4%	110,415	101,645	-7.9%
Orleans	583	635	8.9%	132,240	130,308	-1.5%
Rutland	623	658	5.6%	121,203	130,580	7.7%
Washington	425	444	4.5%	53,942	61,029	13.1%
Windham	397	428	7.8%	61,596	50,764	-17.6%
Windsor	697	767	10.0%	89,952	95,972	6.7%
Vermont	6,571	6,984	6.3%	1,244,909	1,233,313	-0.9%

Source: 2007 USDA Census of Agriculture

Market Value of Agricultural Products Sold by County

	Thousands of dollars			Average per farm (Dollars)		
	2002	2007	% Change	2002	2007	% Change
Addison	105,923	161,417	52.4%	156,691	208,819	33.3%
Bennington	7,818	10,518	34.5%	34,292	46,542	35.7%
Caledonia	23,789	31,542	32.6%	47,107	59,401	26.1%
Chittenden	28,109	33,662	19.8%	59,427	56,958	-4.2%
Essex	6,790	12,147	78.9%	69,283	129,222	86.5%
Franklin	115,435	160,619	39.1%	217,052	217,052	0.0%
Grand Isle	9,236	13,391	45.0%	149,915	117,463	-21.6%
Lamoille	13,732	21,594	57.3%	43,319	71,980	66.2%
Orange	32,008	43,292	35.3%	47,070	63,385	34.7%
Orleans	57,340	82,348	43.6%	98,354	129,682	31.9%
Rutland	23,987	35,286	47.1%	38,503	53,626	39.3%
Washington	14,739	21,511	45.9%	34,680	48,448	39.7%
Windham	18,321	21,408	16.8%	46,150	50,018	8.4%
Windsor	15,838	24,978	57.7%	22,723	32,566	43.3%
Vermont	473,065	673,713	42.4%	71,993	96,465	34.0%

Source: 2007 USDA Census of Agriculture