

Bennington, Vermont

Community Data Profile

Prepared for the Bennington Community Visit
March 15, 2012

Prepared by Julia Rumery and Michael Moser at the Center for Rural Studies

What follows is a collection of indicators and information on the town of Bennington and its residents. These data are meant to help inform the March 15th Bennington Community Visit by the Vermont Council on Rural Development, but they certainly have many other uses.

Most of these indicators have been produced by the US Census Bureau. Sources also include the Vermont Departments of Taxes and Labor, among others.

The UVM Center for Rural Studies engages in many projects to assist Vermonters in accessing and using community-level data for their towns, cities and villages. We encourage all Vermonters to familiarize themselves with some of the most common online sources of this data.

Vermonters will find community profiles with data from assorted sources at:

- **Vermont Indicators Online** – <http://crs.uvm.edu/indicators> and
- **Vermont Housing Data** – www.housingdata.org

Direct access to many of the agencies that produce the indicators can also be found at:

- the US Census Bureau's American FactFinder – <http://factfinder.census.gov>
- the Vermont Dept. of Labor's Covered Employment & Wages report – www.vtlmi.info/indnaics.htm
- the Vermont Dept. of Labor's Labor Force & Unemployment site – www.vtlmi.info/labforce.cfm
- the Vermont Dept. of Taxes' statistics site – www.state.vt.us/tax/statistics.shtml
- the Local Employment Dynamics site – <http://lehd.did.census.gov/led/datatools/onthemap4.html>
- the Vermont Crime Information Center – www.dps.state.vt.us/cjs/crimestats.htm and
- the USDA's Census of Agriculture – www.agcensus.usda.gov

Enjoy!



uvm.edu/crs
802-656-3021

The Center for Rural Studies at the University of Vermont is a nonprofit, fee-for-service research and resource center that works with people and communities to address social, economic, and resource-based challenges. A part of the University's College of Agriculture and Life Sciences since 1978, CRS supports the research and teaching missions of the university through its work in applied research, community outreach, program evaluation, and consulting services. CRS is also the US Census Bureau's State Data Center for Vermont.

Table of Contents

Civics	1
Population Demographics.....	1
Housing	5
Employment and Labor Force.....	7
Income & Poverty	10
Source: US Census Bureau, 2006-2010 American Community Survey	12
Education	12
Agriculture	13

Civics

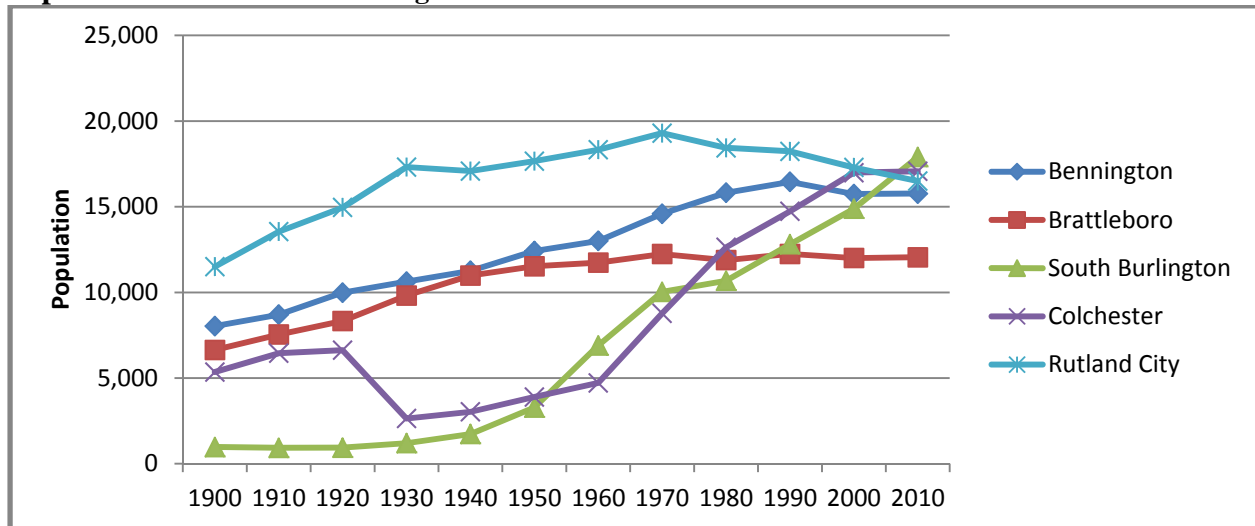
Bennington Civic Stats	
Year Town Incorporated or Chartered	1749
Type of Entity	Municipality - Town
County	Bennington County
Regional Planning Commission	Bennington County Regional Commission
Incorporated Villages	North Bennington, Old Bennington
Municipal Plan	Yes
...approved by Regional Planning Commission	Yes
Zoning Ordinance	Yes
Subdivision Ordinance	Yes
Development Review Board	Yes
Development Category	1 - Traditional Center

Source: Vermont Indicators Online

Population Demographics

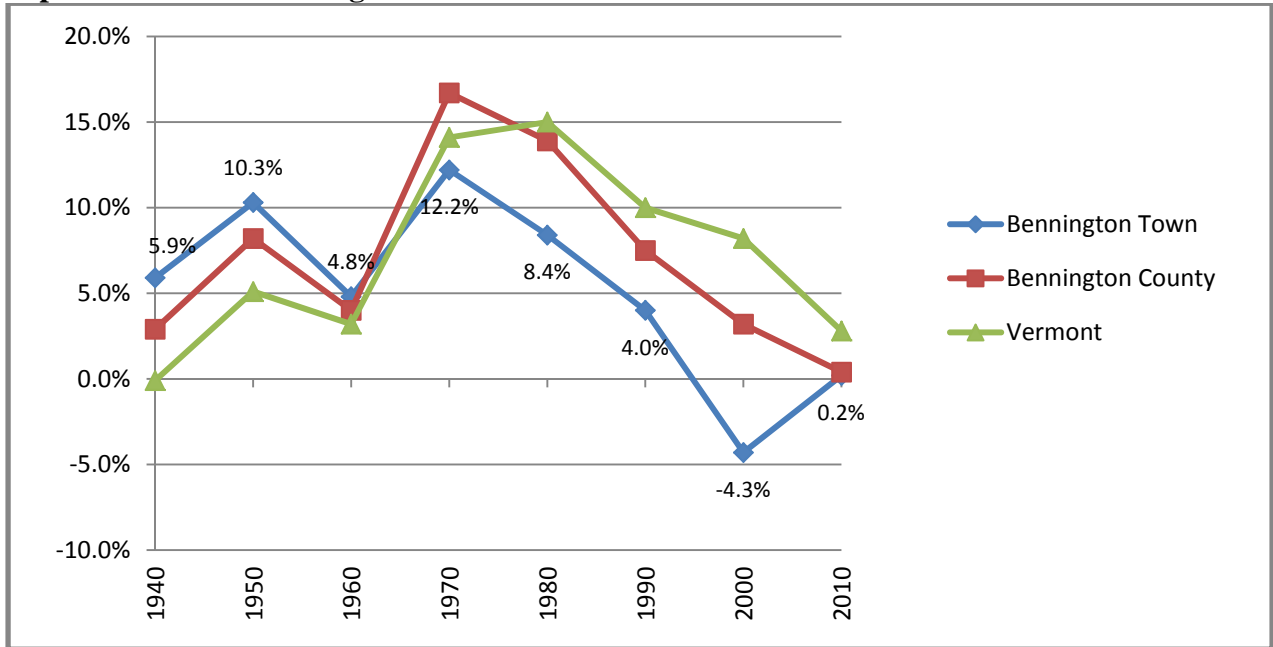
Bennington’s population curve is characterized by steady growth through history, though this steady growth has leveled out over recent decades. This trend is similar to trends occurring in the county and the state overall. Bennington’s location within Bennington County and proximity to NY and MA contribute to its status as an economic and social center in the Southwest region of the state.

Population over Time - Bennington and Selected VT Communities of Similar Size



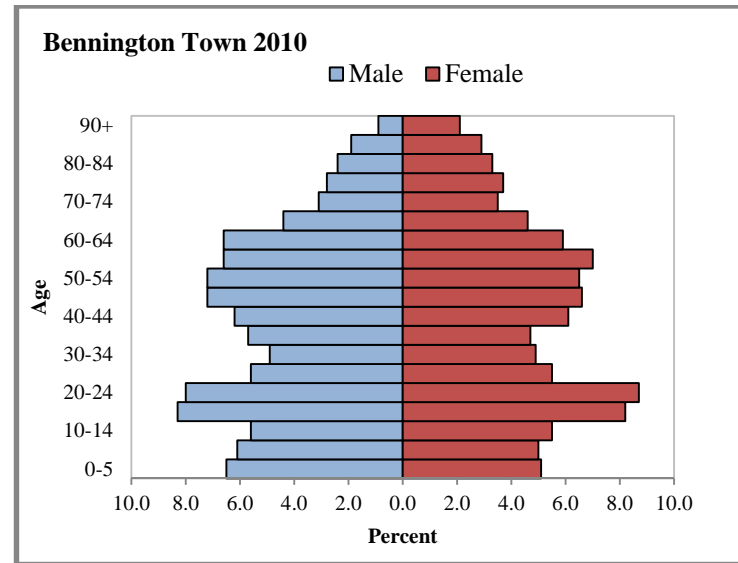
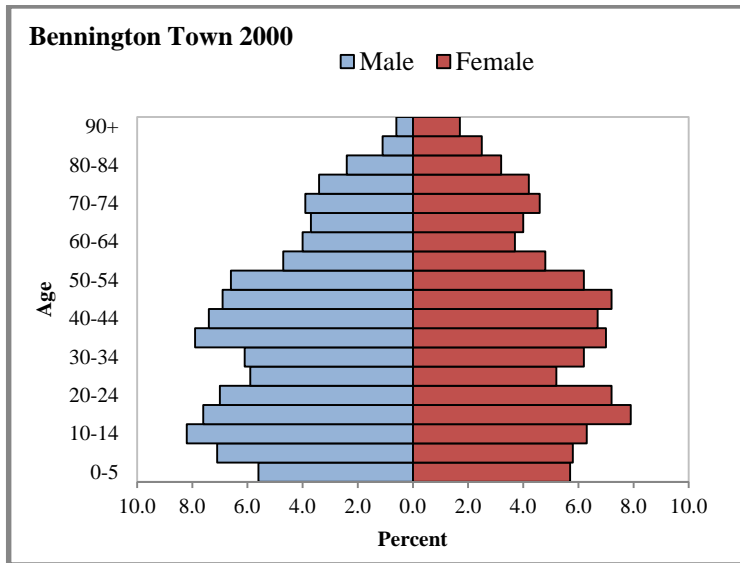
Sources: Vermont Indicators Online, US Census Bureau, 2010 Census

Population Percent Change over Time



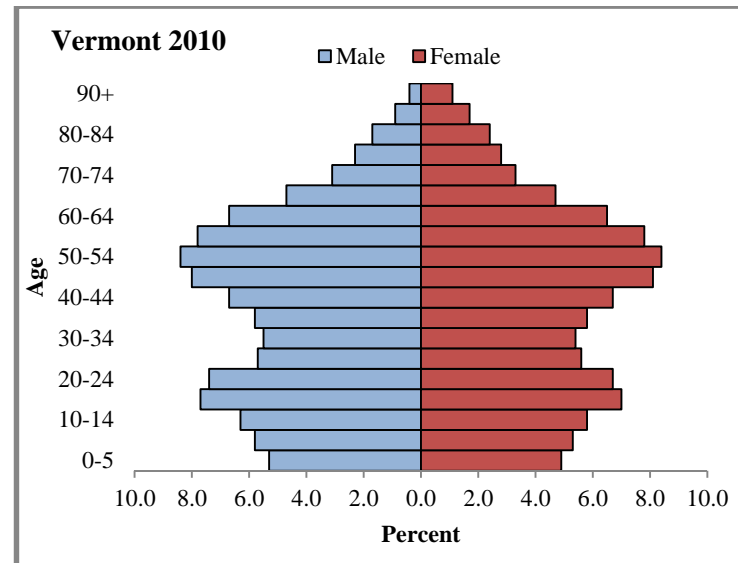
Sources: Vermont Indicators Online, US Census Bureau, 2010 Census

Population Pyramids



Source: US Census Bureau, Census 2000 and Census 2010

Bennington's population pyramid is typical of towns across Vermont. One can see the "Baby Boom Bulge," which is roughly the 40-60 age groups in both Bennington and Vermont in 2010. Below the Baby Boom Bulge we see the echo effect of that generation's children within the population.



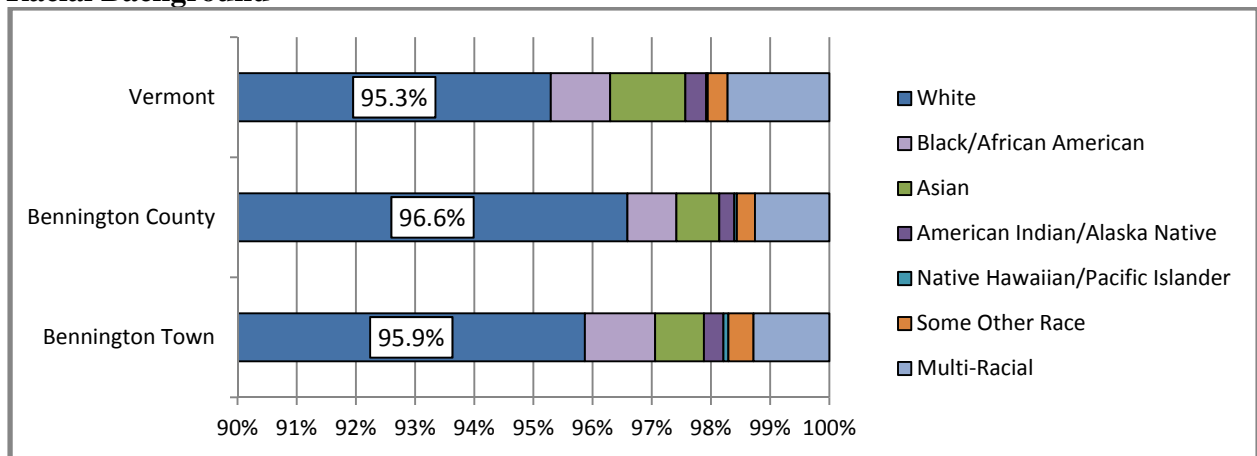
Median Age

	Census 2000	Census 2010
Bennington Town	37.9	40.8
Bennington County	40.3	45.1
Vermont	37.7	41.5

Source: US Census Bureau, 2000 Census and 2010 Census

Census data from 2000 and 2010 shows that the median age in Bennington tends to be lower than that of the county, and about the same as the state. Bennington's resident college-age population certainly contributes to the lower median age overall.

Racial Background



*Note that this table begins at 90%

Source: US Census Bureau, 2010 Census

Bennington's racial background does not vary significantly from the county's or the state's in 2010. Those who claimed white race alone represent the vast majority for all. Vermont has slightly higher proportions of other races than the town and county, most likely as a result of much more diverse areas of the state, like Chittenden County.

Native Vermonters

From 2006-2010 54.7% of Bennington residents were native to Vermont, compared to 46.2% in the county and 51.5% across the state.

Source: US Census Bureau, 2006-2010 American Community Survey

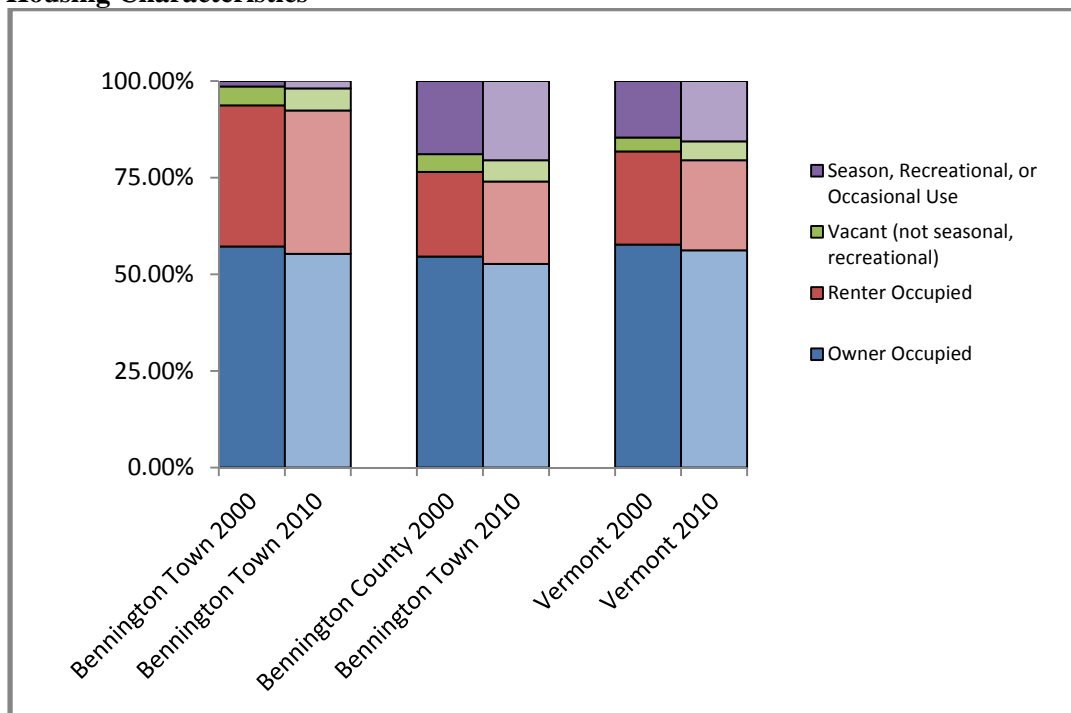
Housing

Bennington had a higher proportion of rental units and a much lower proportion of seasonal (vacation) units than the county and state in 2000 and 2010. The town's housing prices have been tracking below county and state averages.

Bennington Housing Statistics	Bennington Town		Bennington County		Vermont	
	2000	2010	2000	2010	2000	2010
Total Housing Units	6,574	6,763	19,403	20,922	294,382	322,539
...Owner Occupied	3,763	3,738	10,599	11,017	169,784	181,407
<i>Owner occupied as percent of all housing</i>	57.2%	55.3%	54.6%	52.7%	57.7%	56.2%
...Renter Occupied	2,399	2,508	4,247	4,453	70,850	75,035
<i>Renter occupied as a percent of all housing</i>	36.5%	37.1%	21.9%	21.3%	24.1%	23.3%
...Vacant (not seasonal, recreational)	322	384	884	1,158	10,688	15,899
<i>Vacant (not seasonal/rec.) as a percent of all housing</i>	4.9%	5.7%	4.6%	5.5%	3.6%	4.9%
...for Seasonal, Recreational, or Occasional Use	90	133	3,673	4,294	43,060	50,198
<i>Seasonal/recreational as a percent of all housing</i>	1.4%	2.0%	18.9%	20.5%	14.6%	15.6%

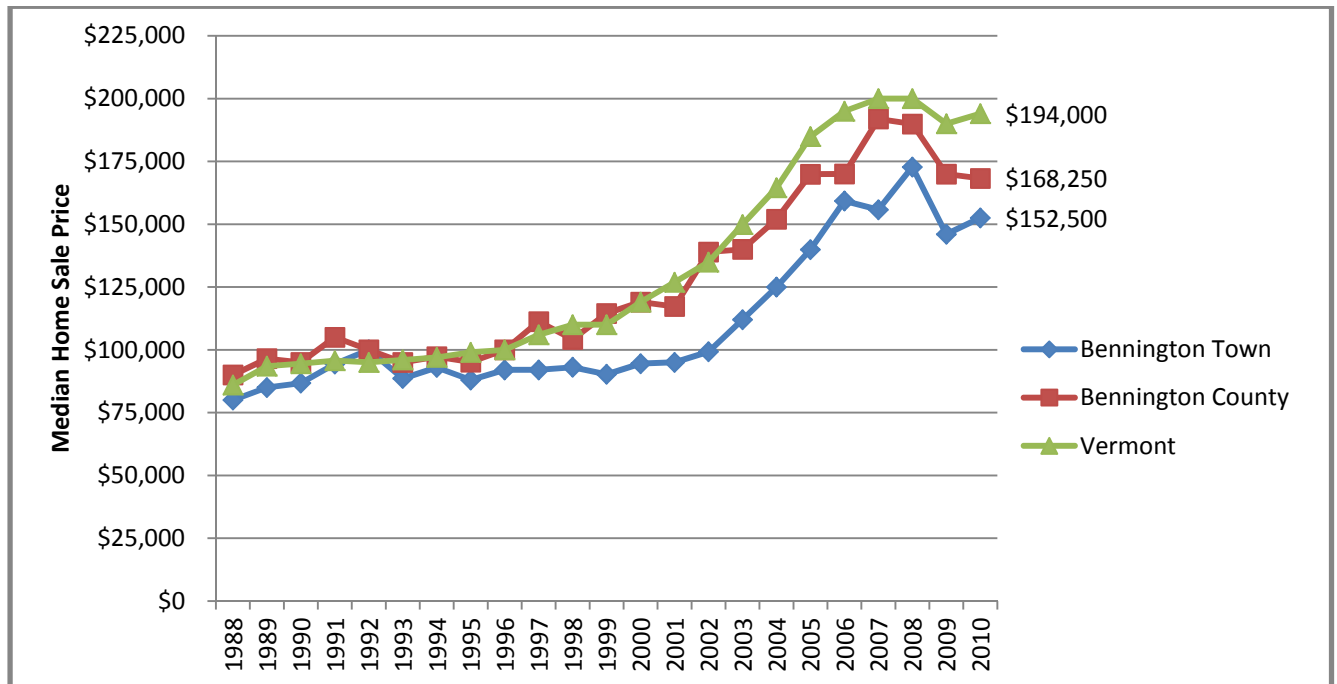
Source: US Census Bureau, 2010 Census

Housing Characteristics



Source: US Census Bureau, 2010 Census

Home Sale Prices



Source: Vermont Dept. of Taxes, calculated by Vermont Housing Finance Agency
 Note: Numbers are NOT adjusted for inflation

Housing Costs, 2006-2010 Combined Estimates

	Bennington		Bennington County		Vermont	
	Estimate	MoE	Estimate	MoE	Estimate	MoE
Number of Households with a Mortgage	2,475	+/-195	7,300	+/-330	123,005	+/-1,397
... median monthly housing costs	1,319	+/-84	1,396	+/-43	1,467	+/-10
... percentage of households with housing costs at or above 35% of household income	28.0%	+/-5.1	29.0%	+/-2.7	28.0%	+/-0.6
Number of Households without a Mortgage	1,248	+/-173	3,991	+/-286	60,157	+/-1,070
... median monthly housing costs	554	+/-29	566	+/-22	580	+/-6
... percentage of households with housing costs at or above 35% of household income	15.6%	+/-5.0	20.0%	+/-3.8	17.9%	+/-0.8
Number of Renter Households	2,418	+/-231	3,953	+/-353	68,252	+/-1,285
... median monthly housing costs	703	+/-30	720	+/-34	809	+/-10
... percentage of households with housing costs at or above 35% of household income	47.6%	+/-6.4	41.1%	+/-4.5	40.6%	+/-1.1

Source: US Census Bureau, 2006-2010 American Community Survey
 Note: MoE = Margin of Error

Bennington's housing costs tended to be lower than the county's and state's within the period of 2006-2010. However discrete comparisons are hampered by the large margins of error.

Employment and Labor Force

The two tables below show the degree to which Bennington employs its own resident workers. While the town imports workers from elsewhere, 60.8% of working residents actually work in Bennington, while 57.4% of those who work in Bennington are from another town.

Bennington Labor Force Efficiency, 2009

	Count	Percent
Living in Bennington	6,586	100.0%
Living and Employed in Bennington	4,002	60.8%
Living in Bennington but Employed Outside	2,584	39.2%

Source: Local Employment Dynamics partnership of the US Census Bureau and Vermont Dept. of Labor

Note: Covers Primary Jobs, not all jobs.

Bennington Regional Employment, 2009

	Count	Percent
Employed in Bennington	9,390	100%
Employed and Living in Bennington	4,002	42.6%
Employed in Bennington but Living Outside	5,388	57.4%

Source: Local Employment Dynamics partnership of the US Census Bureau and Vermont Dept. of Labor

Note: Covers Primary Jobs, not all jobs.

The two following tables show that Bennington town and Bennington County are highly linked in terms of labor force. For the daily commute, most of Bennington residents who work do so in town. Furthermore, over two thirds work in Bennington County.

The Daily Commute – Where Bennington Residents Work, 2009

	Count	Percent
Bennington	4,002	60.8%
Manchester	267	4.1%
Rutland City	226	3.4%
Shaftsbury	192	2.9%
Hartford	164	2.5%
Arlington	143	2.2%
Brattleboro	121	1.8%
Hoosick, NY	104	1.6%
Burlington	81	1.2%
South Burlington	66	1.0%
All Other Locations	1,220	18.5%
Total	6,586	100.0%

Source: Local Employment Dynamics partnership of the US Census Bureau and Vermont Dept. of Labor

Note: Covers Primary Jobs, not all jobs.

The Bennington Labor Shed – Where Workers Commute from to Work in Bennington, 2009

	Count	Percent
Bennington	4,002	42.6%
Shaftsbury	692	7.4%
Hoosick, NY	626	6.7%
Pownal	453	4.8%
White Creek, NY	253	2.7%
Arlington	167	1.8%
Rutland City	134	1.4%
Brattleboro	107	1.1%
Manchester	90	1.0%
Burlington	76	0.8%
All Other Locations	2790	29.7%
Total	9,390	100.0%

Source: Local Employment Dynamics partnership of the US Census Bureau and Vermont Dept. of Labor
 Note: Covers Primary Jobs, not all jobs.

Industry by Sectors

On the next page, the industry sector tables show that the industry with the highest number of jobs in Bennington (19.0%) is Health Care and Social Assistance. That is a slight drop from 20.2% in 2002. The next highest local job sectors are Educational Services (14.6%) and Manufacturing (13.5%), which dropped from 20.3% in 2002. Retail Trade was the 3rd largest sector in 2002, but has dropped from 15.7% to 11.7.4%.

The top four sectors in which Bennington residents work (whether in town or elsewhere) are:

1. Health Care and Social Assistance: 17.0%
2. Retail Trade: 13.2%
3. Manufacturing: 12.9%
4. Educational Services: 12.4%

Manufacturing and retail trade experienced noticeable drops between 2002 and 2009, with the Recession likely being a likely factor. Construction, Public Administration and Professional, Scientific, and Technical Services all saw increases between 2002 and 2009.

Jobs in Bennington by Industry Sector, 2002 vs 2009

Jobs by NAICS Industry Sector	2002		2009		VT 2009
	Count	Percent	Count	Percent	Percent
Agriculture, Forestry, Fishing and Hunting	17	0.2%	88	0.9%	0.9%
Mining, Quarrying, and Oil and Gas Extraction	0	0.0%	16	0.2%	0.3%
Utilities	4	0.0%	50	0.5%	0.8%
Construction	244	2.8%	445	4.7%	4.7%
Manufacturing	1,743	20.3%	1,269	13.5%	11.9%
Wholesale Trade	139	1.6%	247	2.6%	3.6%
Retail Trade	1,352	15.7%	1,100	11.7%	12.8%
Transportation and Warehousing	159	1.9%	250	2.7%	2.6%
Information	241	2.8%	193	2.1%	2.0%
Finance and Insurance	183	2.1%	295	3.1%	3.4%
Real Estate and Rental and Leasing	120	1.4%	90	1.0%	1.1%
Professional, Scientific, and Technical Services	193	2.2%	389	4.1%	4.9%
Management of Companies and Enterprises	11	0.1%	13	0.1%	0.2%
Admin & Support, Waste Mngmt and Remediation	192	2.2%	266	2.8%	2.9%
Educational Services	1,157	13.5%	1,371	14.6%	14.2%
Health Care and Social Assistance	1,735	20.2%	1,787	19.0%	16.9%
Arts, Entertainment, and Recreation	90	1.0%	122	1.3%	1.2%
Accommodation and Food Services	565	6.6%	725	7.7%	8.4%
Other Services (excluding Public Administration)	250	2.9%	246	2.6%	2.8%
Public Administration	194	2.3%	428	4.6%	4.7%

Source: Local Employment Dynamics partnership of the US Census Bureau and Vermont Dept. of Labor

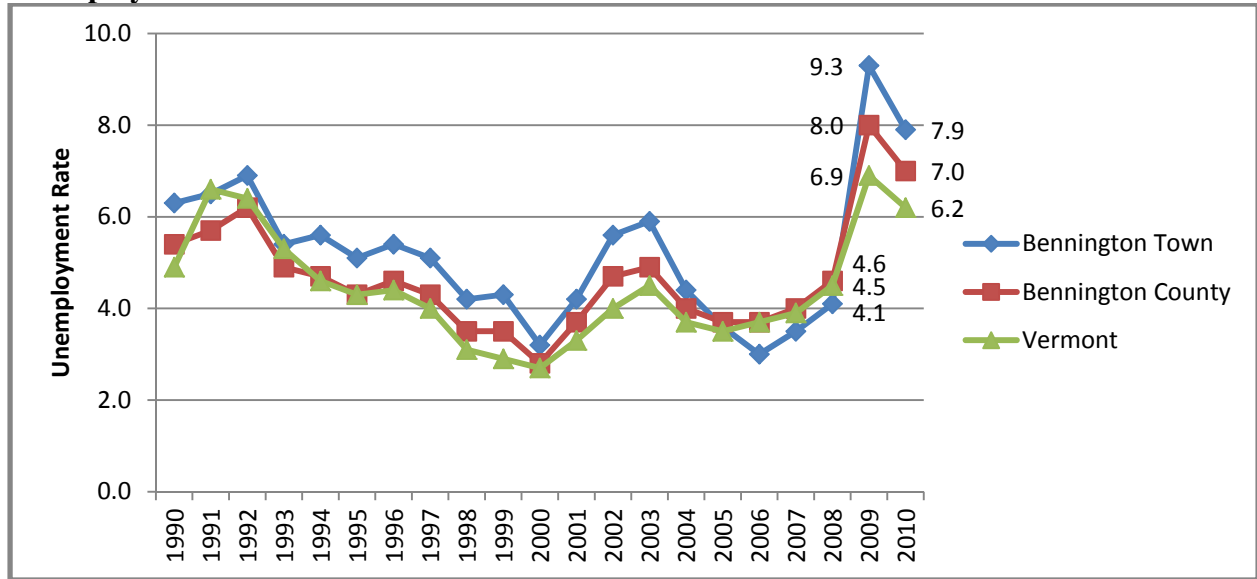
Industry Sectors in Which Bennington Residents Work, 2002 vs 2009

Jobs by NAICS Industry Sector	2002		2009		VT 2009
	Count	Percent	Count	Percent	Percent
Agriculture, Forestry, Fishing and Hunting	34	0.5%	83	1.3%	0.8%
Mining, Quarrying, and Oil and Gas Extraction	1	0.0%	15	0.2%	0.3%
Utilities	15	0.2%	30	0.5%	0.7%
Construction	265	4.1%	367	5.6%	4.6%
Manufacturing	1,419	21.8%	849	12.9%	11.7%
Wholesale Trade	127	2.0%	213	3.2%	3.5%
Retail Trade	1,030	15.8%	870	13.2%	13.0%
Transportation and Warehousing	118	1.8%	162	2.5%	2.5%
Information	160	2.5%	143	2.2%	2.0%
Finance and Insurance	163	2.5%	206	3.1%	3.4%
Real Estate and Rental and Leasing	85	1.3%	74	1.1%	1.1%
Professional, Scientific, and Technical Services	149	2.3%	274	4.2%	4.9%
Management of Companies and Enterprises	7	0.1%	9	0.1%	0.3%
Admin & Support, Waste Mngmt & Remediation	158	2.4%	206	3.1%	2.8%
Educational Services	763	11.7%	815	12.4%	14.7%
Health Care and Social Assistance	996	15.3%	1,119	17.0%	17.2%

Arts, Entertainment, and Recreation	77	1.2%	88	1.3%	1.2%
Accommodation and Food Services	583	9.0%	601	9.1%	8.1%
Other Services (excluding Public Administration)	197	3.0%	214	3.2%	2.8%
Public Administration	155	2.4%	248	3.8%	4.6%

Source: Local Employment Dynamics partnership of the US Census Bureau and Vermont Dept. of Labor

Unemployment Rate



Source: US Dept. of Labor

Bennington’s unemployment rate has historically tracked a little higher than the county and state levels, though it dipped below both the state and county for a short period between 2006 and 2008. In 2009, the town’s rate peaked at 9.3%, much higher than the state’s rate. The 2011 data reveal a downward trend from what will hopefully be the highest point of this most recent economic recession.

Income & Poverty

Incomes earned by households in Bennington continue to remain lower than those within Bennington County and the state, overall. Comparing these changes over time is difficult due to the lack of adjustment for inflation in the available 2006-2010 data.

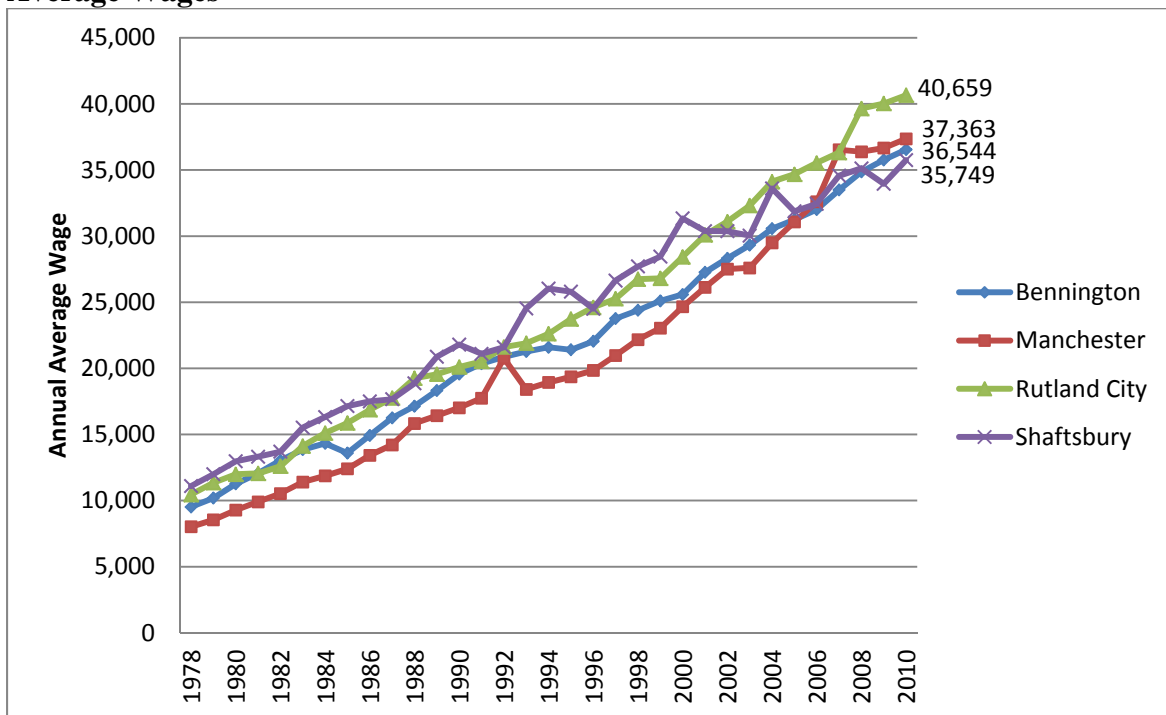
Median Household Income

	1999 (Not Adjusted for Inflation)	2006-2010	2006-2010 MoE
Bennington Town	33,706	39,765	+/-2,387
Bennington County	39,926	47,396	+/-2,346
Vermont	40,856	51,841	+/-447

Sources: U.S. Census Bureau, 2000 Census of Population and Housing and 2006-2010 American Community Survey

Note: These data reflect gross income from all sources.

Average Wages

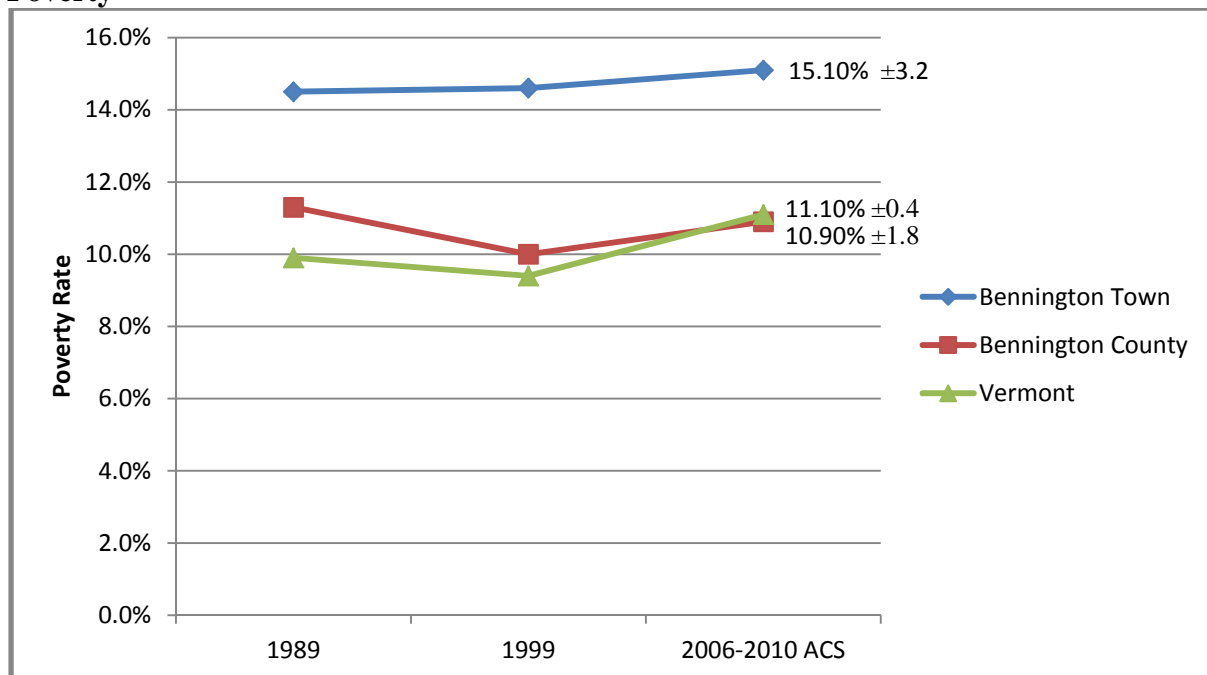


Source: Vermont Dept. of Labor

Notes: These are the average wages paid by employers in the given locations – e.g. not all Bennington residents earn Bennington wages. These numbers are LIMITED to employers that pay Unemployment Insurance. The numbers are NOT adjusted for inflation.

The previous chart lists the average wages earned by jobs in the top four towns that Bennington workers commuted to in 2009. Note that these are averages of ALL wages paid in these towns, and not specifically the wages earned by Bennington residents.

Poverty



Source: US Census Bureau, Census of Population and Housing, and American Community Survey

Bennington's poverty rate has historically held at a significantly higher rate than the poverty rates of the both the county and state.

Over the period 2006-2010, Bennington town has a significantly higher child poverty rate than the county and state. At 25%, this rate is more than double that of the state, overall.

Child (under 18) Poverty Rate

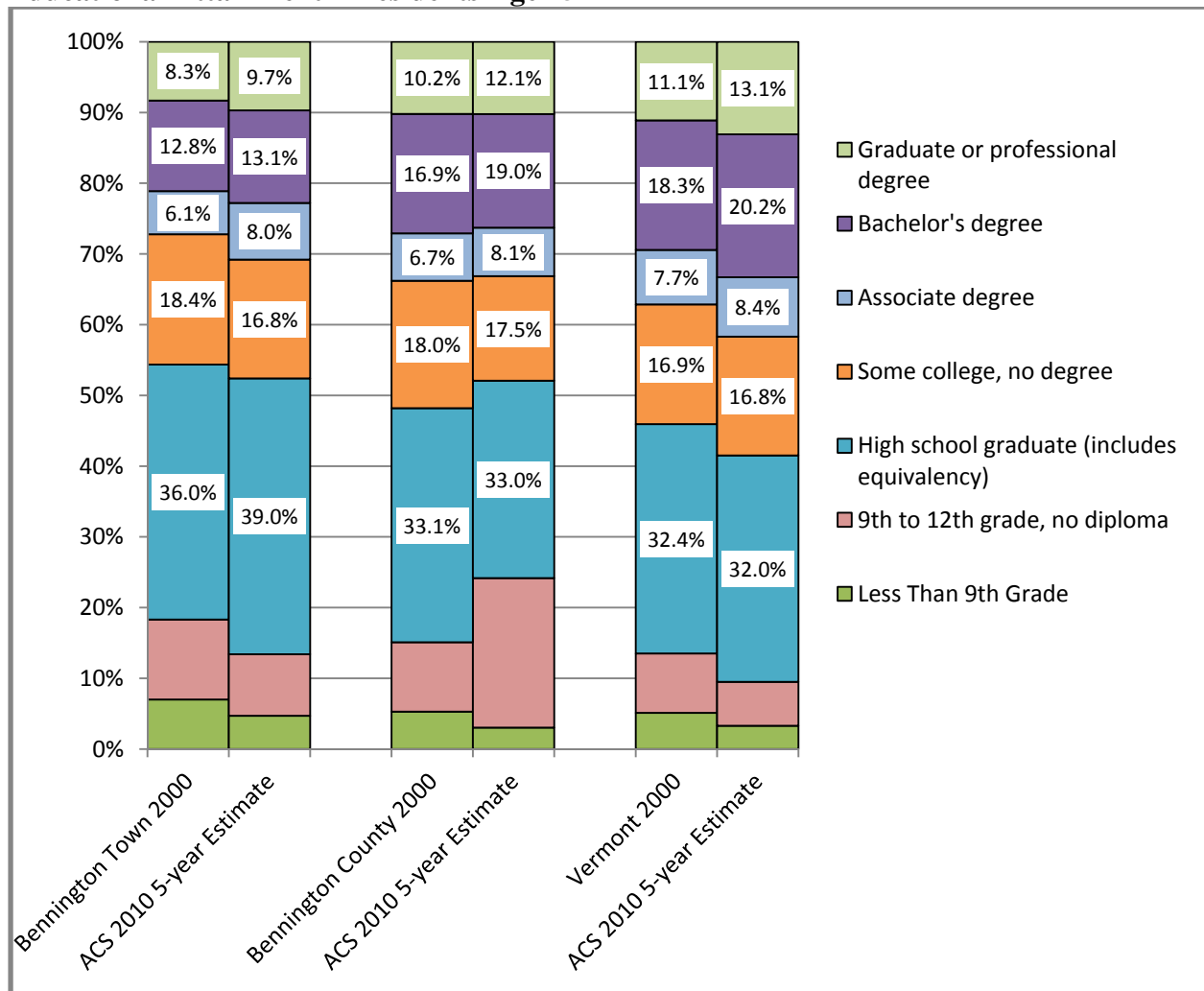
	Estimate	MoE
Vermont	12.0%	+/-0.7
Bennington County	16.7%	+/-4.6
Bennington Town	25.0%	+/-8.1

Source: US Census Bureau, 2006-2010 American Community Survey

Education

Bennington maintains consistently higher numbers of high school (or equivalency) graduates than the county or the state. The population with bachelor's or higher degrees in Bennington however, is lower than both state and county averages.

Educational Attainment – Residents Age 25+



Source: US Census Bureau, 2000 Census and 2006-2010 American Community Survey Note: Margins of Error not shown.

Agriculture

Farm Inventory by County

	Number of farms			Acres of land in farms		
	2002	2007	% Change	2002	2007	% Change
Addison	676	773	14.3%	193,376	187,482	-3.0%
Bennington	228	226	-0.9%	41,126	36,580	-11.1%
Caledonia	505	531	5.1%	84,318	81,946	-2.8%
Chittenden	473	591	24.9%	76,679	83,382	8.7%
Essex	98	94	-4.1%	19,838	26,732	34.8%
Franklin	770	740	-3.9%	190,115	180,006	-5.3%
Grand Isle	99	114	15.2%	16,289	17,138	5.2%
Lamoille	317	300	-5.4%	53,820	49,749	-7.6%
Orange	680	683	0.4%	110,415	101,645	-7.9%
Orleans	583	635	8.9%	132,240	130,308	-1.5%
Rutland	623	658	5.6%	121,203	130,580	7.7%
Washington	425	444	4.5%	53,942	61,029	13.1%
Windham	397	428	7.8%	61,596	50,764	-17.6%
Windsor	697	767	10.0%	89,952	95,972	6.7%
Vermont	6,571	6,984	6.3%	1,244,909	1,233,313	-0.9%

Source: 2007 USDA Census of Agriculture

Market Value of Agricultural Products Sold by County

	Thousands of dollars			Average per farm (Dollars)		
	2002	2007	% Change	2002	2007	% Change
Addison	105,923	161,417	52.4%	156,691	208,819	33.3%
Bennington	7,818	10,518	34.5%	34,292	46,542	35.7%
Caledonia	23,789	31,542	32.6%	47,107	59,401	26.1%
Chittenden	28,109	33,662	19.8%	59,427	56,958	-4.2%
Essex	6,790	12,147	78.9%	69,283	129,222	86.5%
Franklin	115,435	160,619	39.1%	217,052	217,052	0.0%
Grand Isle	9,236	13,391	45.0%	149,915	117,463	-21.6%
Lamoille	13,732	21,594	57.3%	43,319	71,980	66.2%
Orange	32,008	43,292	35.3%	47,070	63,385	34.7%
Orleans	57,340	82,348	43.6%	98,354	129,682	31.9%
Rutland	23,987	35,286	47.1%	38,503	53,626	39.3%
Washington	14,739	21,511	45.9%	34,680	48,448	39.7%
Windham	18,321	21,408	16.8%	46,150	50,018	8.4%
Windsor	15,838	24,978	57.7%	22,723	32,566	43.3%
Vermont	473,065	673,713	42.4%	71,993	96,465	34.0%

Source: 2007 USDA Census of Agriculture